



**ANNUAL OPERATIONS REPORT
2009**



**Know what's below.
Call before you dig.**



2009 ANNUAL SUMMARY

During 2009, Alabama One Call faced similar challenges as many other one call centers across the nation with the continued decrease in excavation activity. However, there also continues to be an increase in other requested areas of services for our members and in administrative functions. As more of our member companies face cutbacks within their own companies, they have looked to Alabama One Call as a resource to co-op damage prevention activities beyond the normal "ticket taking" process.

One of these programs resulting in our completing our fourth year of the AFACT – Alabama Public Awareness Cooperative Training – program for our gas and pipeline companies. This year the AOC conducting seventeen (17) educational meetings across the state to excavators, first responders, and public officials regarding pipeline safety as well as the general "call before you dig" awareness message. We had over 2,300 people attend these meetings in 2009 and continue to receive positive feedback from the attendees on the information provided in this educational forum.

On the legislative front, Alabama One Call helped form the Alabama Damage Prevention Committee which includes stakeholders from various associations, governmental entities and other interested parties in damage prevention efforts in Alabama. The Committee agreed that legislative improvements were the top priority for this group in regards to reducing unnecessary damages to underground facilities and protecting the lives of those who work and live in their vicinity. The Committee reviewed the current proposed draft legislation and the intent is to have a version that is agreeable to everyone to have introduced in the 2010 legislative session.

As our member companies continue to try to find ways to streamline their damage prevention programs and improve their customer service regarding line locating, Alabama One Call's board approved providing a Ticket Management software to our members, beginning in 2009. This ticket management program, known as KorWeb, can be used by our members to help automate the receipt and management of their locate requests. This is a web based program that allows the members the ability to receive their locate requests via the internet, manage their locate volume by plotting the locations on the map, routing locates to designated locators and archiving the data for analysis, in addition to many other features.

Alabama One Call again experienced a decrease in our call and ticket volumes during 2009. As fewer excavation projects and new home construction starts are planned, our locate request volume is directly affected. This seems to be a trend throughout the southeast and the nation as a whole. However, Alabama One Call is continuing to educate on the need to "Know What's Below – Call 811 Before You Dig." Our educational and promotional programs are listed at the end of the annual summary for your review.

Each year, Alabama One Call's Board of Directors and Staff work hard to provide an effective and cost efficient damage prevention program to reduce the chance of damage to the underground utility infrastructure that the citizens of Alabama depend on daily. We again thank you for your support of this effort and for the role you play in making Alabama a safer place to live and work.

Annette R. Reburn
Executive Director
February 2010

ALABAMA ONE-CALL MEMBERSHIP LIST

AT&T/D
AT&T/T
Access Fiber Group, Inc.
Air Products & Chemicals
Alabama Department of Transportation
Alabama Gas Corporation
Alabama Power Company
Alabama Utility Services, LLC
Alabama Wastewater Systems, LLC
Alabaster Water Board
AlaTenn Pipeline Company
Albertville Municipal Utilities Board
Alexander City, City of
American Water
Anniston Water Works and Sewer Board
Ardmore Telephone
Arlington Properties
Athens Utilities, City of
Atmore, City of
Atmos Energy
Auburn Water Works Board, City of
Baldwin County Commission
Baldwin County EMC
Baldwin County Sewer Service
Bakerhill Water Authority
Bay Gas Storage Company, Inc.
Bayou La Batre Utilities
BCI/DSSI Services LLC
Bear Creek/Hackleburg Housing Authority
Beauregard Water Authority
Belforest Water System
Berry, Town of
Berry Housing Authority
Bioflow – Russell Lands, Inc.
Birmingham Water Works & Sewer Board
Bishop Petroleum, Inc.
Black Box Network Services, Inc. – Gov. Solutions
Black Warrior Electric
Black Warrior Methane Corporation
Boaz Gas Board
Boaz Water and Sewer Board
Boston, Housing Authority of
BP Products North America
Brent Utilities Board, City of
Brewton, City of
Bridgeport Utilities
Bright House Networks – Birmingham
Bright House Networks – Eufaula & Wetumpka
Brindlee Mountain Telephone Company
Broadwing Communications
Brookside, Town of
Butler, Town of Utilities Board
Cable Alabama Corporation
Cable One
Cable Options
Calera Water & Gas Board
Camellia Communications
Camp Hill, Town of
Canoe Water & Fire Protection Authority
Carbon Hill Housing Authority
Carbon Hill Utilities Board
Carroll's Creek Water Authority
Cave Spring, City of
Central Alabama Electric Cooperative
Central Talladega County Water District
Central Water Works
CenturyTel of Alabama
Charter Communications of Alabama
Charter Communications – Lanett
Cherokee Water and Gas Department
Chevron Pipeline Company
Chevron U.S.A. Inc.
Childersburg Water, Sewer & Gas Board
Chilton Water Authority
Clarke-Mobile Counties Gas District
Clayton Housing Authority
Cleburne County Water Authority
Colonial Pipeline
Columbia Square Apartments
Columbiana, City of
Columbiana Water Board
Com-Link, Inc.
Comcast Cablevision of Gadsden
Comcast Cablevision (Huntsville)
Comcast Cablevision (Mobile)
Comcast Cablevision of the Shoals
Comcast Cablevision (Tuscaloosa)
Cordova Water and Gas
Cottonwood Housing Authority
Covington Electric Cooperative, Inc.
Crosstex Energy Services
Cullman Electric Cooperative
Cullman-Jefferson Counties Gas District
Cullman Water Department, City of
Dadeville Housing Authority
Dadeville Water Supply & Gas Board
Daphne Utilities Board, City of
Dauphin Island Gathering Partners
DCP Midstream, LLC
Decatur Housing Authority
Decatur Utilities
DeKalb-Cherokee Counties Gas District
Demopolis CATV Company
Demopolis Water Works and Sewer Board

ALABAMA ONE-CALL MEMBERSHIP LIST

Diverse Power
Dixie Electric Cooperative
Dixie Pipeline Company
Dora Utilities
Douglas Pipeline
East Alabama Water District
East Central Baldwin Water Authority
East Central Gas District
East Cullman Water System
El Paso Production Company
Enbridge Pipelines (Alabama Gathering), Inc.
Enbridge Pipelines (Alabama Intrastate), Inc.
Enbridge Pipelines (AlaTenn), Inc.
Energen Resources – Oak Grove
Energen Resources – Vance
Englewood Hulls Water System
Enterprise Products Operating L.P.
Enviro-Systems, LLC
Escambia Operating Company, LLC
Eufaula Water Works & Sewer Board
Exxon Mobil Corporation
Fairhope Utilities Board
Falkville, Town of
Farmers Telephone Co-Op, Inc.
Fayette Gas Board
Fayetteville Water Authority
Flomaton, Town of
Floralta Gas Department
Florence, City of
Florence Housing Authority
Florida Gas Transmission Company
Fort Rucker Army Base/Remtech Services
Four Star Oil & Gas
Freebird Gas Storage
Freemanville Water System, Inc.
Frontier Communications of Alabama
Frontier Communications of Lamar Co.
Frontier Communications of the South
Fultondale Gas Board
Genesis Crude Oil, L.P.
Geneva County Gas District
GeoMet, Inc.
Georgiana Housing Authority
Gordo, Town of
Grand Bay Water Works Board, Inc.
Granger Energy of Decatur LLC
Graysville Utilities
Greater Gadsden Housing Authority
Greenhill Water & Fire Protection Authority
GTC, Inc.
Guin Housing Authority
Gulf Atlantic Operations, LLC
Gulf Coast Mineral, LLC
Gulf Shores, Utilities Board of the City of
Gulf South Pipeline
Gulfstream Natural Gas System, LLC
Gulf Telephone Company
Guntersville Water Board
Haleyville Housing Authority
Hamilton Housing Authority
Hanceville Housing Authority
Hartselle Utilities Board
Harvest Monrovia Water Authority
Hayneville Telephone Company, Inc.
Hilcorp Energy Company
HighMount Exploration and Production LLC
Hoover, City of
Huguley Water and Fire Protection
Hunt Refining Company
Huntsville, City of
Huntsville, City of Water Pollution Control
Huntsville Housing Authority
Huntsville Utilities, Electric, Gas and Water
Integra Water
Interstate Fibernet
Jabsco Oil Operating, LLC
Jacksonville Gas Water & Sewer Board
Jemison Water Department
Jenkins Brick Company
Joe Wheeler EMC
Kentucky Data Link, Inc.
Kinder Morgan
KNOLOGY of Montgomery
KNOLOGY – Columbus, GA
Knology of the Valley
Lafayette, City of
Lamar County Gas District
Lamar County Water System
Lanett, City of
Lanett Housing Authority
Lee Chambers Utilities District
Lemoyne Water System, Inc.
Level 3 Communications
LightCore
Lightwave Technologies, LLC
Lincoln, City of
Linde Gas, Inc.
Linden, City of
Lindsey Communications
Lineville Housing Authority
Livingston, City of Utility Board
Loachapoka Water Authority
Loxley, Town of
Lynn Water Works

ALABAMA ONE-CALL MEMBERSHIP LIST

Madison, City of, Public Works Department
Madison, City of Water and Wastewater
Madison River Communications
Magellan Midstream Partners, L.P.
Maplesville Waterworks & Gas Board
Marshall County Gas District
Marshall Dekalb Electric Cooperative
MCI Telecommunications
McCall Water System, Inc.
Mediacom
Mediacom – Huntsville
Millry Telephone Company, Inc.
Mitchell Water System, Inc.
Mobile, City of
Mobile Area Water and Sewer Service
Mobile County Water, Sewer and FPD
Mobile Gas Service
Momentum Telecom
Monroe Gas Storage, LLC
Monroeville Water Works
Montevallo Water Works
Moulton Gas Board, Town of
Moundville Telephone
Mount Vernon Water & Gas
Mulga, Town of
Muscle Shoals, Utilities Board of the City of
National Telephone of Alabama DBA TEC
New Hope Telephone Cooperative
North Alabama Gas District
North Baldwin Utilities
Northeast Morgan County Water Authority
Northwest Alabama Gas District
Notasulga, Town of
Oakman Telephone
OGP Operating, Inc.
Otelco Telephone, LLC
Otelco Telephone, LLC / Blountsville Division
Otelco Telephone, LLC / Walnut Grove
Oneonta Utilities Board
Opelika Housing Authority
Opelika Power and Light
Opelika Water Works
Opp Housing Authority
Orange Beach Wastewater Treatment Plant
Orange Beach Water Authority
Palmer Petroleum, Inc.
Parker Creek Water Company LLC
Perdido Bay Water, Sewer & FPD
Phil Campbell Housing Authority
Phil Campbell Water Works & Sewer Board
Pickens County Natural Gas District
Piedmont Housing Authority
Piedmont Water, Gas & Sewer Board
Pine Belt Telephone Company
Pine Bluff Water Authority
Pine Energies, Inc.
Plains Marketing, LP
Plantation Pipeline Company
Poarch Creek Indians Utilities Authority
Praxair, Inc.
Quantum Resources Management LLC
Qwest Communications
Red Bay Water and Gas
Riviera Utilities
Roanoke Telephone Company
Roanoke, Utilities Board of the City of
Robertsdale, City of
Robinson's Bend Operating Company
Rockford Water & Gas
Russellville Gas Board
Samson Resources Company
Saraland, City of
Saraland Water Service
Scottsboro Electric Power Board
Scottsboro Housing Authority
Scottsboro Water, Sewer & Gas Board
Sellers Station Water System
Selma Housing Authority
SG Resources, Mississippi, LLC
Sheffield Utilities
Shelby County Water Services
Shell Chemical
Shell Western E&P, Inc.
Silverhill, Town of
Singing River Electric Power Association
Slocomb Water Works & Sewer Board
Smiths Water and Sewer Authority
South Alabama Electric Cooperative
South Alabama Gas District
South Alabama Utilities
South Eastern Electric Development
South of Dauphin Apartments
Southeast Alabama Gas District
Southeast Supply Header
Southern Gas Transmission Company
Southern Power Company
Southern Light, LLC
Southern Natural Gas
Spanish Fort Water System
Spooner Petroleum Company
Spring Creek Apartments
Sprint
ST Services
Stevenson, Utilities Board of the Town of

ALABAMA ONE-CALL MEMBERSHIP LIST

York, City of

Stewartville Water Authority
Sulligent Housing Authority
Sumiton Gas Board
Summerdale, Town of
Sylacauga Housing Authority
Sylacauga Utilities Board
Talladega Housing Authority
Talladega Water and Sewer Board
Tallassee, City of
Tallassee Housing Authority
TCG
TDS Telecom – Butler, Goshen, Grove Hill
TDS Telecom - Centre
Telepak Networks, Inc.
Tenaska Alabama Partners, LP
Tennessee Gas Pipeline Company
Texas Eastern Transmission Corp.
Thorsby, Town of
Timber Ridge Apartments
Transcontinental Pipeline
Trussville Utilities
Turnerville Water and F.P.D.
Tuscaloosa, City of
Tuscumbia Gas Department
Tuscumbia Housing Authority
Union Springs Telephone Company
Union Springs Utilities
University of Alabama in Huntsville
Unocal Corporation
Uriah Water System
U S Amines
US Steel
USG Pipeline Company
VAW Water System, Inc.
Valley Brook Apartments
Vernon Housing Authority
Vernon Water and Sewer Board
Vina Natural Gas
Wadley, Town of
Warrior River Water Authority
Weatherly Utility Services, LLC
Wedowee, Town of
West Jefferson Gas System
West Morgan – East Lawrence Water Authority
Wheeler Basin Natural Gas
Whitehouse Water System
Wilcox County Gas District
Williams Field Services
Wilton, Town of
Windstream Communications, Inc.
Winfield Housing Authority
Xspedius

TOTAL MEMBERSHIP 365
Dec 09

ASSOCIATE MEMBERS

CONSOLIDATED UTILITY SERVICES, INC

11640 Arbor Street, Suite 200
Onaha, NE 68144
Contact: Christie Bryan

CENTRAL LOCATING SERVICE

168 Chandalar Place Drive
Pelham, AL 35214
Contact: Bram Fuller
(205) 822-9540

PROCALL SERVICES

13026 Riverland Cove
Biloxi, MS 39532-9506
Contact: Marty Roberts
(228) 392-5889

UTILIQUEST

826 Creighton Rd. Suite B102
Pensacola, FL 32504
Brent Smith
850-474-8980

UTILIQUEST – GEORGIA

500 Northridge Road
Suite 300
Atlanta, GA 30350
Contact: H J McGinness
(678) 250-2605

SUPPORTING MEMBERS

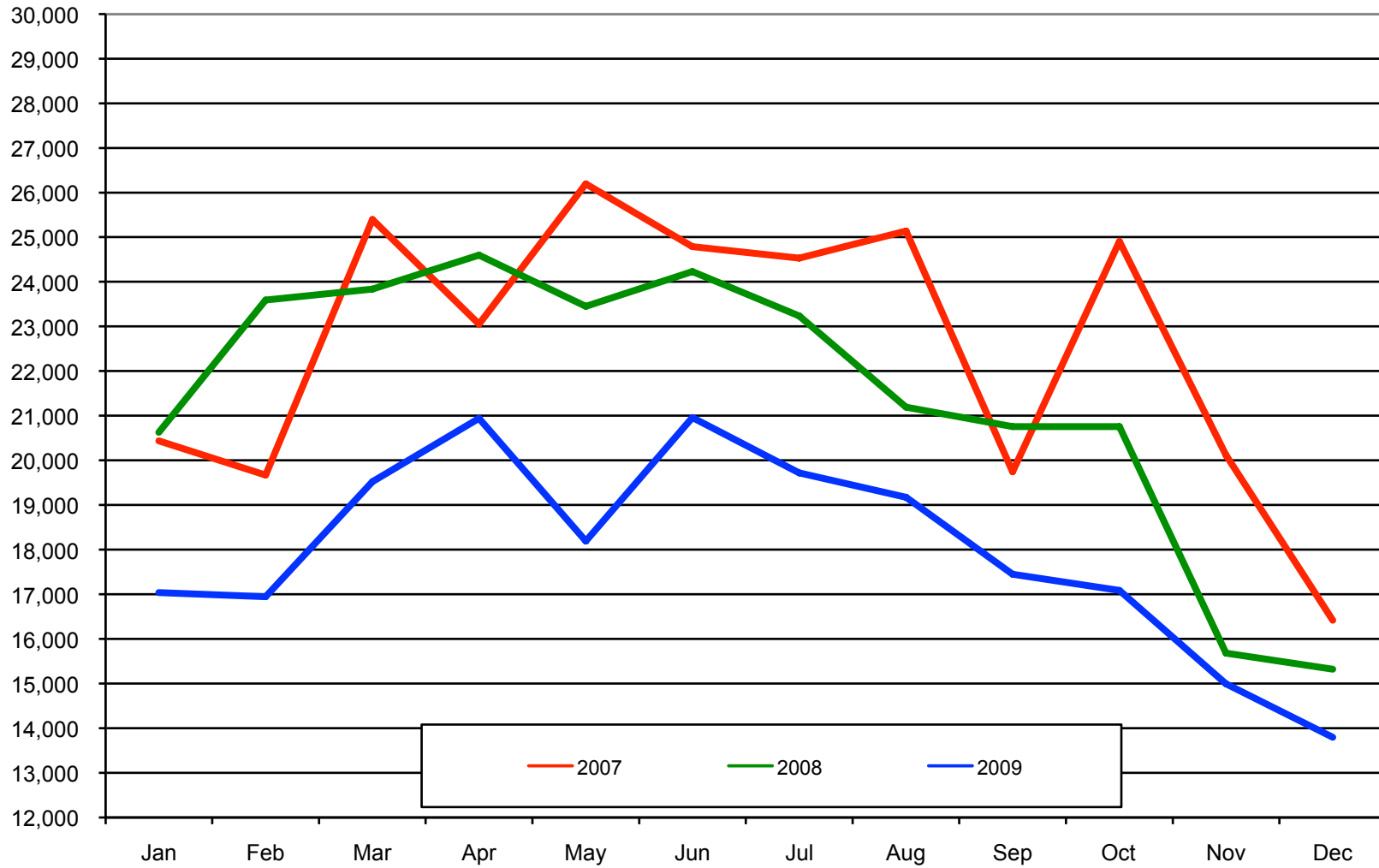
GEORGE COOP ASSOCIATES

788 Pinewood Lake Dr
Venice, FL 34292-3680
Contact: Karen Vernon
(205) 491-3131

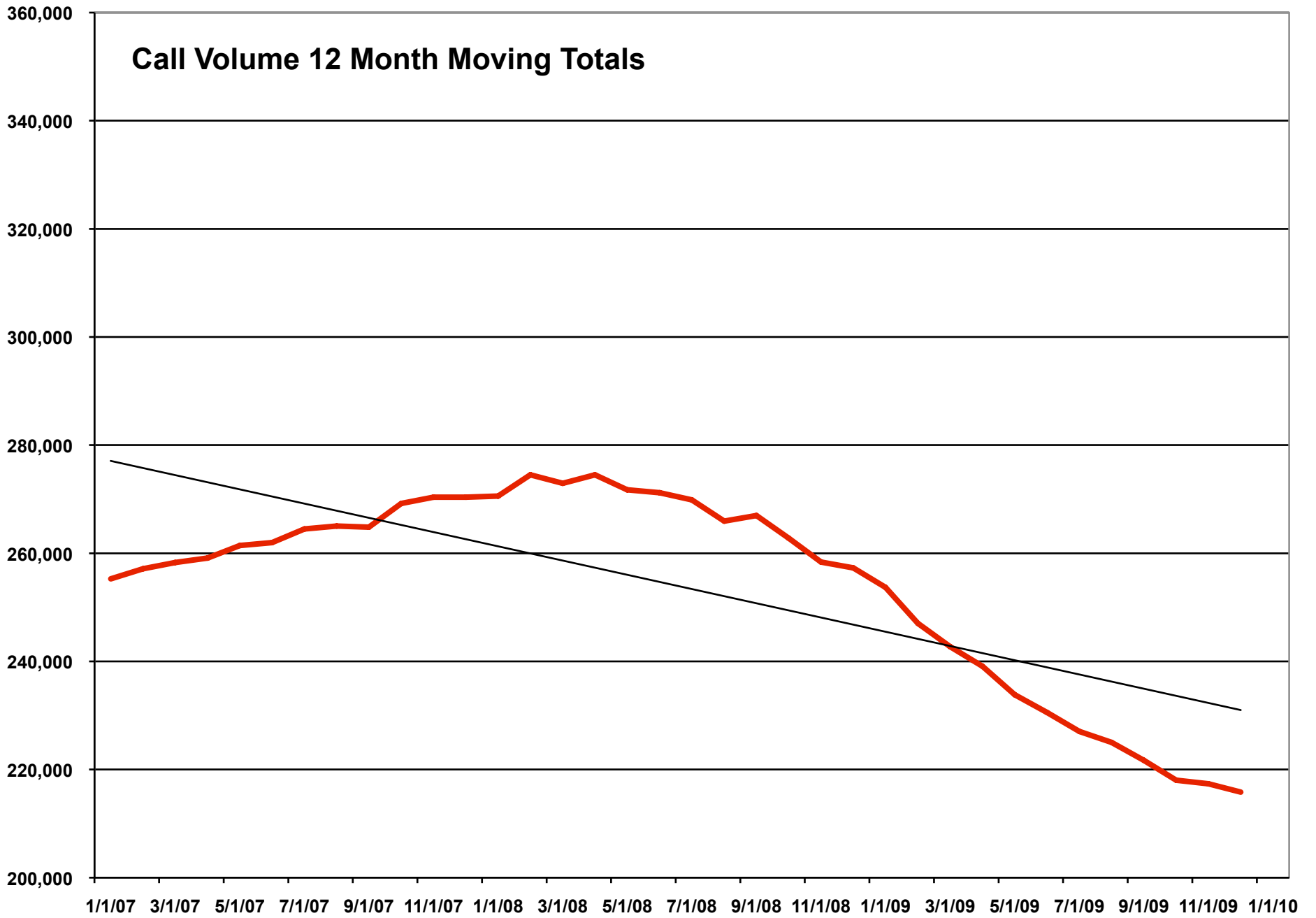
**ALABAMA ONE CALL
HISTORICAL REPORT OF CALL VOLUME
2007-2009**

MONTH	2007	INCREASE	%	2008	INCREASE	%	2009	INCREASE	%
JANUARY	20,438	1,639	9%	20,628	190	1%	17,041	-3,587	-17%
FEBRUARY	19,673	1,895	11%	23,591	3,918	20%	16,948	-6,643	-28%
MARCH	25,393	1,134	5%	23,836	-1,557	-6%	19,522	-4,314	-18%
APRIL	23,052	830	4%	24,600	1,548	7%	20,943	-3,657	-15%
MAY	26,196	2,339	10%	23,450	-2,746	-10%	18,190	-5,260	-22%
JUNE	24,790	513	2%	24,230	-560	-2%	20,962	-3,268	-13%
JULY	24,531	2,515	11%	23,236	-1,295	-5%	19,722	-3,514	-15%
AUGUST	25,138	569	2%	21,191	-3,947	-16%	19,174	-2,017	-10%
SEPTEMBER	19,742	(207)	-1%	20,759	1,017	5%	17,448	-3,311	-16%
OCTOBER	24,903	4,357	21%	20,755	-4,148	-17%	17,088	-3,667	-18%
NOVEMBER	20,119	1,162	6%	15,679	-4,440	-22%	14,992	-687	-4%
DECEMBER	16,418	33	0%	15,322	-1,096	-7%	13,797	-1,525	-10%
TOTALS	270,393	16,779	7%	257,277	(13,116)	-5%	215,827	(41,450)	-16%

Call Volume Historical Chart 2007-2009



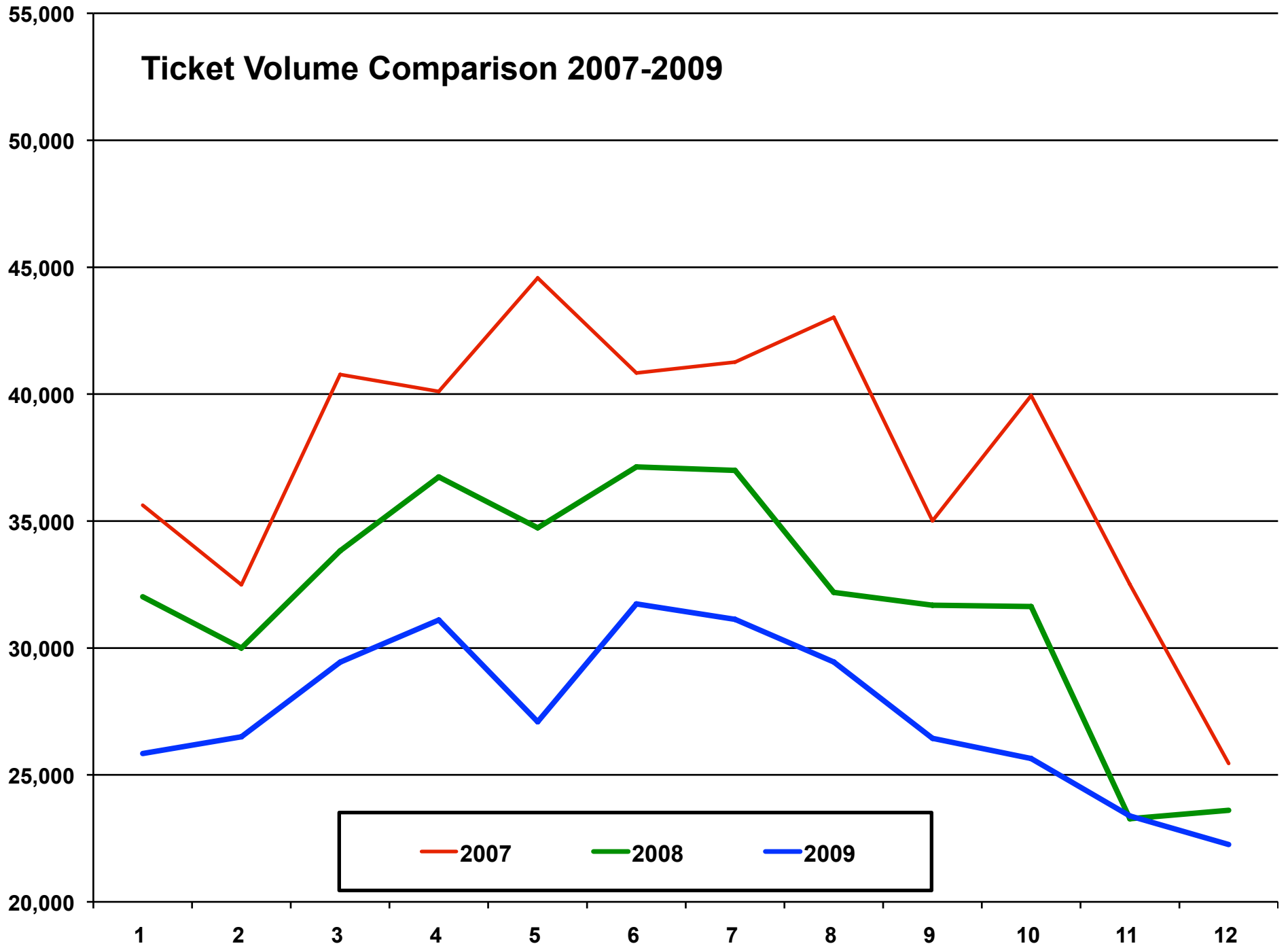
Call Volume 12 Month Moving Totals



**Alabama One Call
Historical Report of Ticket Volume
2007-2009**

Month	2007	INCR	%	2008	INCR	%	2009	INCR	%
JAN	35,629	323	1%	32,016	(3,613)	-10%	25,841	-6,175	-19%
FEB	32,490	(838)	-3%	29,994	(2,496)	-8%	26,503	-3,491	-12%
MAR	40,774	(1,841)	-4%	33,823	(6,951)	-17%	29,438	-4,385	-13%
APR	40,104	1,505	4%	36,737	(3,367)	-8%	31,106	-5,631	-15%
MAY	44,576	2,294	5%	34,738	(9,838)	-22%	27,095	-7,643	-22%
JUN	40,836	(1,821)	-4%	37,135	(3,701)	-9%	31,740	-5,395	-15%
JUL	41,261	1,413	4%	36,998	(4,263)	-10%	31,126	-5,872	-16%
AUG	43,025	(2,256)	-5%	32,188	(10,837)	-25%	29,448	-2,740	-9%
SEP	35,009	(1,796)	-5%	31,684	(3,325)	-9%	26,445	-5,239	-17%
OCT	39,941	2,867	8%	31,637	(8,304)	-21%	25,647	-5,990	-19%
NOV	32,509	(1,005)	-3%	23,274	(9,235)	-28%	23,382	108	0%
DEC	25,451	(3,252)	-11%	23,610	(1,841)	-7%	22,258	-1,352	-6%
TOTAL	451,605	(4,407)	-1%	383,834	(67,771)	-15%	330,029	(53,805)	-14%

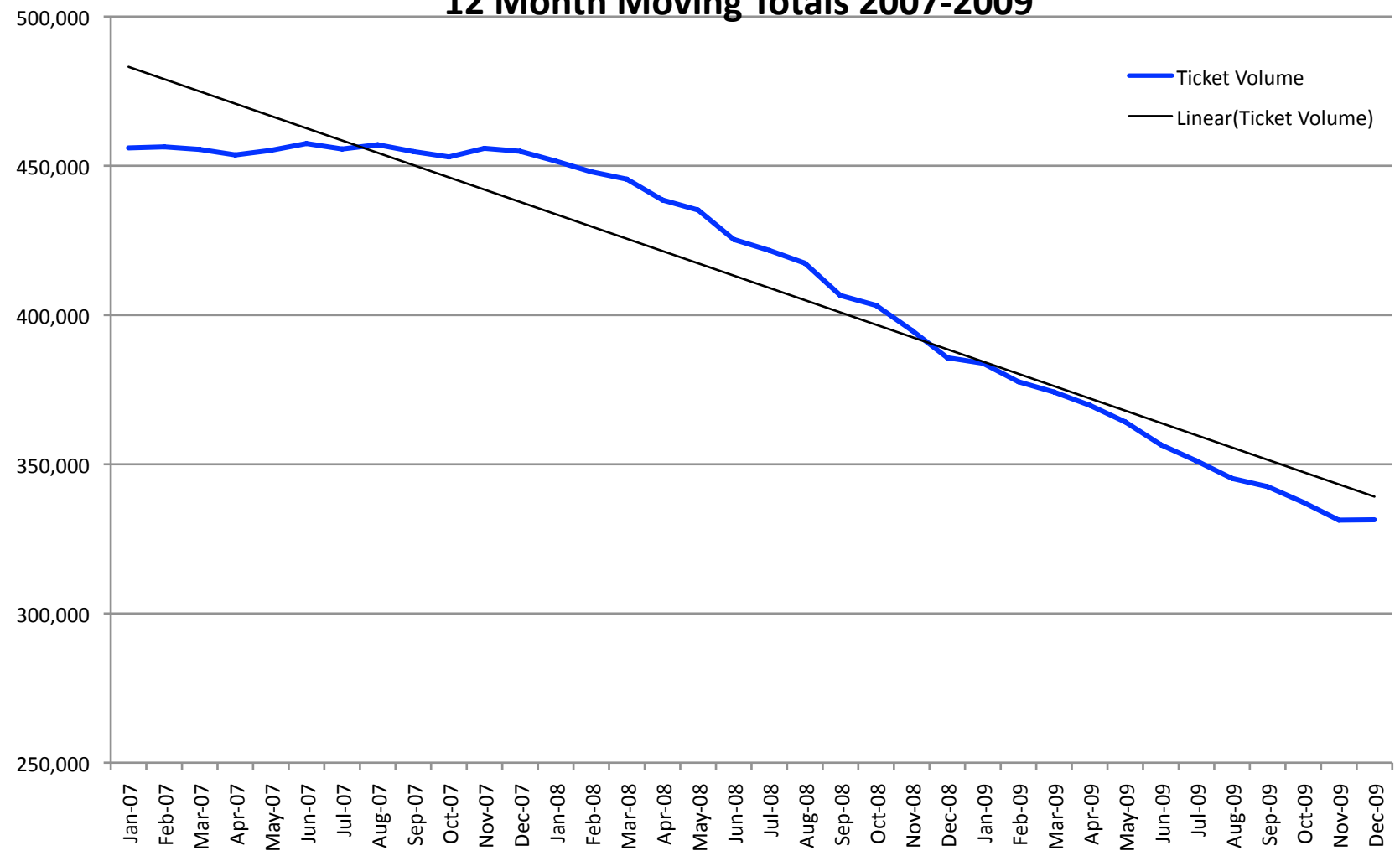
Ticket Volume Comparison 2007-2009



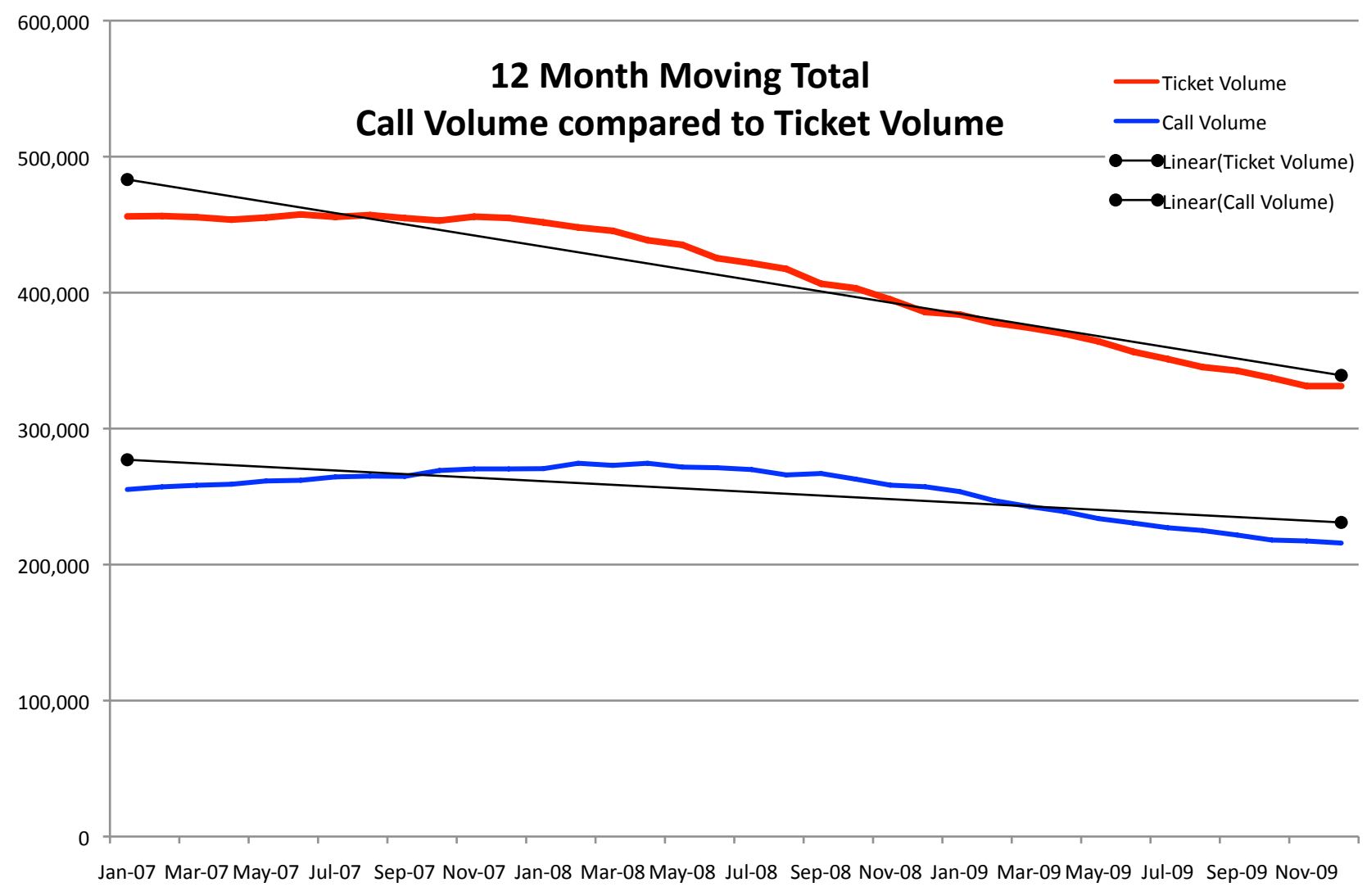
Ticket Volume

12 Month Moving Totals 2007-2009

Ticket Volume
Linear(Ticket Volume)



12 Month Moving Total Call Volume compared to Ticket Volume



Member Transmissions	1	1	1	1	1	1	1	1	1	1	1	1	1	1	2009 YTD
MEMBER	Jan-09	Feb-09	Mar-09	Apr-09	May-09	Jun-09	Jul-09	Aug-09	Sep-09	Oct-09	Nov-09	Dec-09			
TOTAL	161,644	166,843	181,893	192,175	167,335	214,360	209,468	198,544	179,747	177,336	161,378	154,926	2,165,649		
ACCESS FIBER GROUP, INC										110	128	126	108	472	
AIR PRODUCTS & CHEMICALS - 01	8	20	42	40	20	11	14	46		24	32	26	20	303	
ALABAMA DEPARTMENT OF TRANSPORTATION	831	834	835	979	794	848	675	797	599	606	532	512	8,842		
ALABAMA GAS															
ANNISTON	298	308	454	369	345	504	441	385	367	400	396	279	4,546		
BIRMINGHAM	4,387	4,466	4,830	4,866	4,290	5,024	4,811	4,832	4,166	4,474	3,885	3,427	53,458		
GADSDEN	288	243	302	374	309	366	457	395	399	310	281	285	4,009		
JASPER	108	144	174	164	170	203	193	219	164	149	112	117	1,917		
LEEDS	232	270	236	301	316						1		1,356		
MARION	94	70	113	93	84	120	123	110	63	67	97	68	1,102		
MONTGOMERY	2,191	3,068	2,092	2,058	1,740	1,885	2,023	1,876	1,667	1,558	1,416	1,279	22,853		
OPELIKA	753	734	941	1,200	867	846	857	779	667	638	642	660	9,584		
PHENIX CITY	359	267	350	171	165	378	425	409	380	320	308	279	3,811		
ROGERSVILLE	100	137	203	349	334	237	254	179	146	109	112	134	2,294		
SELMA	173	133	141	169	120	234	185	169	149	145	94	157	1,866		
ST CLAIR									419	517	538	476	1,950		
TALLADEGA	289	320	340	301	292	133	228	137	151	115	112	134	2,552		
TUSCALOOSA	1,045	1,151	1,341	1,427	1,193	1,290	1,275	1,063	1,073	930	813	845	13,446		
TUSKEGEE	74	69	63	66	62	74	91	69	95	71	36	30	800		
ALABAMA POWER															
BIRMINGHAM DIV. - APC1CL	5,582	5,698	6,190	6,325	5,524	6,381	6,222	6,350	5,391	5,878	5,068	4,694	69,303		
APC1SH	129	108	111	102	74	97	46	50	58	60	85	132	1,052		
EASTERN DIV. - APC2CL	1,885	1,826	2,252	2,253	2,043	2,598	2,531	2,524	2,353	1,942	1,861	1,775	25,843		
SOUTHERN DIV. - APC3CL	3,834	4,689	4,010	4,089	3,267	3,833	4,004	3,747	3,211	3,061	3,006	2,821	43,572		
WESTERN DIV. - APC4CL	2,082	2,233	2,713	2,828	2,572	2,781	2,686	2,367	2,077	2,079	1,748	1,669	27,835		
APC5B	1												1		
MOBILE DIV. - APC5CL	2,809	2,765	3,123	3,259	3,187	3,464	3,102	2,950	2,931	2,826	2,410	2,470	35,296		
SOUTHEAST DIV. - APC6CL	1,319	1,280	1,347	1,625	1,431	1,375	1,476	1,464	1,544	1,369	1,330	1,295	16,855		
FORT RUCKER	318	304	294	364	253	296	329	356	378	427	372	401	4,092		
APC9IT	515	483	519	574	478	499	401	408	459	461	520	17	5,334		
ALABAMA UTILITY SERVICES, LLC	70	58	58	75	90	62	78	73	63	78	94	69	868		
ALABAMA UTILITY SERVICES, LLC 02											17	106	192	70	385
ALABAMA WASTEWATER SYSTEMS, LLC	21	23	30	30	40	37	44	58	52	47	116	129	627		
ALABASTER WATER BOARD	233	230	222	242	201	263	265	254	227	200	200	172	2,735		
ALABASTER WATER BOARD - E	22	18	25	26	12	23	20	16	21	24	19	18	244		
ALATENN PIPELINE COMPANY	12	10	28	21	15	17	16	24	19	25	15	16	218		
ALEXANDER CITY, CITY OF	196	155	145	139	168	226	165	105	97	90	103	99	1,688		
ALBERTVILLE MUNICIPAL UTILITIES BOARD	63	61	56	69	81	101	84	76	97	88	78	68	922		
AMERICAN WATER	322	310	300	378	251	298	337	361	383	430	374	405	4,149		
ANNISTON WATER WORKS AND SEWER BOARD	209	207	309	250	207	360	263	303	275	298	267	215	3,163		
ARDMORE TELEPHONE	170	218	240	280	296	376	536	291	280	247	210	218	3,362		
ARLINGTON PROPERTIES	7	5	13	5	8	3	7	1	3	11	4	1	68		
ASHTON PLACE APARTMENTS					40	4	6	3	0	0	0	0	53		
A T & T	1,670	1,985	1,829	1,771	1,513	1,737	1,719	1,577	1,365	1,513	1,267	1,235	19,181		
A T & T															
BIRMINGHAM 01	5,786	5,973	6,470	6,511	5,736	6,792	6,421	6,633	5,661	6,143	5,112	4,749	71,987		
BIRMINGHAM 05	224	227	283	231	178								1,143		
DECATUR 01	5,402	5,203	6,516	7,284	6,055	7,769	7,408	6,957	6,061	5,644	5,641	5,208	75,148		
MOBILE	3,406	3,244	3,610	3,847	3,691	4,105	3,733	3,426	3,432	3,418	2,886	2,903	41,701		
MONTGOMERY 01	4,762	5,601	5,227	5,334	4,442	5,130	5,652	5,077	4,529	4,180	4,014	3,773	57,721		
MONTGOMERY 02	2,005	2,208	2,481	2,602	2,230	2,465	2,529	2,092	1,937	1,814	1,597	1,580	25,540		
PENSACOLA	2	0	1	1	0	1	1	1	2	0	0	0	9		
ATHENS, CITY OF	643	554	623	723	654	819	1,069	686	635	626	558	580	8,170		
ATMORE, CITY OF	81	93	89	84	65	83	96	87	111	64	58	34	945		
ATMOS ENERGY	0	0	0	0	0	0	0	0	0	0	0	0			
AUBURN WATER WORKS	394	469	579	615	434	492	479	501	388	398	381	464	5,594		
BAKERHILL WATER AUTHORITY	28	20	33	39	34	26	49	35	22	29	24	35	374		
BALDWIN COUNTY COMMISSION	130	96	103	110	120	96	92	94	77	87	77	63	1,145		
BALDWIN COUNTY EMC	911	771	950	843	861	961	924	878	782	811	631	626	9,949		
BALDWIN COUNTY SEWER SERVICE, LLC	556	404	492	477	496	516	513	460	415	467	409	407	5,612		
BALDWIN COUNTY SEWER SERVICE, LLC - E	6	7	9	9	7	13	10	9	9	9	9	14	109		
BAY GAS STORAGE COMPANY, LTD.	105	153	135	151	126	108	47	74	40	50	33	27	1,049		
BAYOU LA BATRE UTILITIES	69	69	101	74	70	77	65	81	76	78	97	55	912		
BCI/DSSI SERVICES LLC	337	170	255	229	233	271	184	196	139	178	101	158	2,451		
BCI - CONNEXION - OPELIKA					8	11	21	7	7	10	10	13	84		
BEAUREGARD WATER AUTHORITY	60	66	90	109	60	85	76	78	74	75	53	51	877		
BELFOREST WATER SYSTEM	112	57	72	110	85	132	201	146	154	147	110	87	1,413		
BERRY, TOWN OF	21	36	25	34	22	20	16	27	21	17	29	31	299		
BERRY HOUSING AUTHORITY	1	2	2	8	5	1	2	2	1	0	1	0	25		
BIOFLOW - RUSSELL LANDS, INC.	37	24	5	12	5	24	16	9	6	10	9	9	166		
BIRMINGHAM WTR WORKS & SWR BRD	4,030	4,023	4,400	4,384	3,872	4,493	4,324	4,457	3,827	4,116	3,593	3,276	48,795		
BISHOP PETROLEUM	18	16	5	6	6	4	3	4	10	6	6	6	90		
BLACK BOX NETWORK SVCS, INC. - GOVERNMENTAL SOLUTIONS	59	56	70	75	46	36	58	41	69	64	64	41	700		
BLACK WARRIOR ELECTRIC MEMBERSHIP CORPORATION	6	2	6	5	7	8	3	5	15	6	1	1	65		
BLACK WARRIOR METHANE CORP.	7	12	9	5	11	8	21	13	8	7	6	3	110		
BOAZ GAS BOARD	93	70	153	83	135	95	87	130	144	100	68	85	1,243		
BOAZ WATER AND SEWER BOARD	50	33	91	57	55	41	34	79	77	37	44	45	643		
BOSTON, HOUSING AUTHORITY OF	0	1	0	1	0	0	0	1	0	0	1	0	4		
BP PRODUCTS PIPELINE NORTH AMERICA	17	16	18	19	16	25	44	32	19	22	17	14	259		
BP PRODUCTS PIPELINE NORTH AMERICA - 02	5	1	16	9	7	5	3	5	4	1	4	3	63		
BP PRODUCTS PIPELINE NORTH AMERICA - BHAM	6	19	62	60	8	12	7	15	10	13	4	9	225		

MEMBER	Jan-09	Feb-09	Mar-09	Apr-09	May-09	Jun-09	Jul-09	Aug-09	Sep-09	Oct-09	Nov-09	Dec-09	2009 YTD
BP PRODUCTS PIPELINE NORTH AMERICA - MONTGOMERY	0	1	0	0	0	0	1	1	0	0	1	0	4
BP PRODUCTS PIPELINE NORTH AMERICA - MOBILE	2	2	1	2	2	3	4	0	3	0	1	2	21
BRENT, CITY OF UTILITIES BOARD	18	17	31	38	40	50	43	37	29	32	18	39	392
BREWTON, CITY OF	111	99	83	58	61	91	69	73	96	61	52	47	901
BRIDGEPORT UTILITIES	11	9	5	21	14	18	14	15	22	14	16	18	177
BRIGHT HOUSE NETWORKS - BIRMINGHAM	1,234	1,195	1,331	1,376	1,155	1,209	1,032	987	815	1,060	955	975	13,324
BRIGHT HOUSE NETWORKS 02 - WETUMPKA	87	78	91	108	97	97	103	107	105	89	81	89	1,132
BRIGHT HOUSE NETWORKS 03 - EUFAULA	683	707	974	826	696	715	763	725	589	647	647	624	8,596
BRINDLEE MOUNTAIN TELEPHONE CO.	62	40	73	70	36	57	56	88	62	69	35	22	670
BROADWING COMMUNICATIONS	156												156
BROOKSIDE, TOWN OF	11	10	12	23	15	12	13	11	16	20	7	11	161
BUTLER, TOWN OF UTILITIES BOARD	8	5	13	20	31	28	19	15	16	10	13	8	186
CABLE ALABAMA	1,310	1,238	1,656	1,870	1,540	1,991	1,721	1,770	1,540	1,479	1,410	1,448	18,973
CABLE ALABAMA - E	86	80	89	110	77	91	98	79	73	82	84	104	1,053
CABLE OPTIONS	24	26	31	32	26	23	23	14	23	24	11	16	267
CABLE ONE	146	161	203	234	173	234	179	203	185	205	184	142	2,249
CALERA WATER & GAS BOARD	166	143	206	241	214	205	245	286	227	248	189	242	2,612
CAMELLIA COMMUNICATIONS	58	50	56	121	80	114	94	102	52	54	37	68	886
CAMELLIA COMMUNICATIONS - E	0	0	0	0	0	0	0	0	0	0	0	0	-
CAMP HILL, TOWN OF	6	3	3	4	8	5	12	10	4	8	3	3	69
CANOE WATER AND FIRE PROTECTION AUTHORITY	19	28	19	13	9	20	20	23	18	13	13	5	200
CARBON HILL HOUSING AUTHORITY	0	0	0	0	0	0	0	0	0	0	0	0	-
CARBON HILL UTILITIES BOARD	6	13	13	11	13	14	18	26	11	41	17	8	191
CARROLL'S CREEK WATER AUTHORITY	113	143	198	192	187	178	174	176	103	110	90	74	1,738
CAVE SPRING, CITY OF	3	0	6	6	5	12	6	7	6	2	8	32	93
CENTRAL AL ELECTRIC CO-OP 01	158	191	213	206	170	208	173	208	162	167	155	128	2,139
CENTRAL AL ELECTRIC CO-OP 01 - E	10	6	11	10	8	18	12	23	9	14	13	9	143
CENTRAL AL ELECTRIC CO-OP 02	74	90	109	125	110	169	133	137	119	98	96	108	1,368
CENTRAL AL ELECTRIC CO-OP 02 - E	4	5	6	6	6	13	11	11	9	7	8	6	92
CENTRAL AL ELECTRIC CO-OP 03	16	54	24	36	28	49	7	37	40	28	7	16	356
CENTRAL AL ELECTRIC CO-OP 03 - E	1	0	0	0	0	3	0	0	0	0	0	1	8
CENTRAL AL ELECTRIC CO-OP 04	189	225	322	283	206	226	252	239	188	166	154	141	2,591
CENTRAL AL ELECTRIC CO-OP 04-E	13	8	2	7	23	9	25	18	11	4	5	15	140
CENTRAL TALLADEGA COUNTY WATER DISTRICT	26	16	16	23	18	29	26	19	9	20	18	10	230
CENTRAL WATER WORKS, INC.	11	25	24	13	11	23	12	27	9	15	6	7	183
CENTURYTEL OF ALABAMA	2,851	2,782	3,213	3,449	3,098	3,596	3,524	3,489	3,186	3,002	2,965	2,712	37,867
CHARTER COMMUNICATIONS OF ALABAMA								8,801	8,080	8,106	7,482	7,038	39,507
CHARTER COMMUNICATIONS - ATHENS	717	664	770	850	762	995	1,219	41					6,018
CHARTER COMMUNICATIONS - DECATUR	366	384	397	434	376	428	441	23					2,849
CHARTER COMMUNICATIONS - ALEXANDER CITY	138	92	83	79	108	112	167						779
CHARTER COMMUNICATIONS - BIRMINGHAM	3,784	3,987	4,357	4,369	3,982	4,722	4,738	237					30,176
CHARTER COMMUNICATIONS - HARTSELLE	59	90	84	103	87	99	91	1					614
CHARTER COMMUNICATIONS - LANETT	204	262	234	426	302	171	209	148	169	119	133	179	2,556
CHARTER COMMUNICATIONS - LEE COUNTY (TCI)	620	677	852	903	674	801	781	68					5,376
CHARTER COMMUNICATIONS - MONTGOMERY (TCI)	2,001	2,871	1,829	1,997	1,677	1,777	1,951	93					14,196
CHARTER COMMUNICATIONS - TUSC.	519	570	760	703	657	764	663	38					4,674
CHEROKEE WATER AND GAS DEPARTMENT	1	1	0	0	0	0	1	1	5	3	2	0	14
CHEVRON PIPELINE COMPANY	0	1	1	2	1	1	1	1	2	2	4	3	18
CHEVRON U.S.A. INC.	2	0	2	3	9	4	8	6	6	18	4	8	70
CHEVRON U.S.A. INC. - E	0	0	2	3	9	4	8	1	6	1	1	0	35
CHILDERSBURG WTR.SWR.& GAS BD	98	79	79	62	72	72	78	75	58	58	35	38	804
CHILTON WATER AUTHORITY	109	122	149	178	159	234	193	222	210	154	156	143	2,029
CLARKE-MOBILE COUNTIES GAS DISTRICT	348	329	408	447	589	488	39	363	314	316	219	250	4,110
CLARKE-MOBILE COUNTIES GAS DISTRICT - E	0	0	0	0	0	0	40	0	0	0	0	0	40
CLAYTON HOUSING AUTHORITY	3	1	1	2	1	1	0	1	5	1	2	1	19
CLEBURNE COUNTY WATER AUTHORITY	88	76	117	127	172	152	149	182	175	150	188	242	1,818
CLEBURNE COUNTY WATER AUTHORITY - E	0	0	0	0	0	0	0	0	0	0	0	0	-
CLS, INC.	24,146	24,955	27,417	29,114	25,320	25,417	24,968	23,790	21,181	20,720	18,932	18,054	284,014
CLS, INC. 03	225	247	284	255	210	238	240	237	279	246	268	239	2,968
COLONIAL PIPELINE	230	23	257	256	249	239	193	174	139	175	161	155	2,251
COLONIAL PIPELINE - 02	19	36	40	36	24	19	22	23	20	15	9	16	279
COLONIAL PIPELINE - 03	17	16	20	27	12	21	19	15	21	8	5	5	186
COLUMBIA SQUARE APARTMENTS	4	5	12	11	12	9	7	6	3	7	7	7	84
COLUMBIANA GAS	34	27	32	22	28	26	20	16	13	12	12	16	258
COLUMBIANA WATER BOARD	62	53	93	56	52	50	49	30	25	33	39	37	579
COMCAST CABLEVISION OF GADSDEN	258	214	259	313	237	302	363	339	327	241	229	262	3,344
COMCAST CABLE-HUNTSVILLE	970	960	1,179	1,510	1,123	1,477	1,303	1,108	1,108	1,127	1,051	1,142	14,167
COMCAST CABLE - HUNTSVILLE - E	0	0	0	0	0	0	0	0	0	0	0	0	-
COMCAST CABLE-MOBILE	780	996	1,169	1,286	1,281	1,425	1,241	1,216	1,040	1,028	877	942	13,281
COMCAST CABLEVISION OF THE SHOALS	651	620	750	868	668	794	814	747	692	564	587	516	8,271
COMCAST CABLE-TUSC.	745	781	1,073	805	898	919	726	677	656	556	629	9,419	
COM-LINK, INC.	44	67	77	52	39	51	50	25	32	51	44	51	583
CONSOLIDATED UTILITY SERVICES	3,892	3,785	4,257	4,546	2,145	26,103	4,422	4,501	4,249	4,034	3,832	3,617	69,383
CONSOLIDATED UTILITY SERVICES-02							3,237	25,583	24,069	21,515	21,019	19,171	18,135
CORDOVA WATER AND GAS	10	10	4	20	15	9	5	9	8	7	8	11	116
CORDOVA WATER AND GAS - E	0	0	0	0	0	0	0	0	0	0	0	0	-
COTTONWOOD HOUSING AUTHORITY	2	2	1	4	1	4	1	3	2	2	0	0	18
COVINGTON ELECTRIC COOPERATIVE	162	168	146	155	142	159	158	150	157	212	135	109	1,853
CULLMAN ELECTRIC CO-OP	430	472	510	576	536	700	667	626	157	622	459	452	6,207
CULLMAN-JEFFERSON	1,098	1,073	1,180	1,341	1,208	1,688	1,616	1,696	1,276	1,102	1,068	862	15,208
CULLMAN WATER	184	211	217	219	209	272	240	251	176	167	173	164	2,483
DADEVILLE HOUSING AUTHORITY	4	0	3	1	7	5	10	4	2	3	2	8	49
DADEVILLE WATER SUPPLY & GAS BD	170	11	25	11	32	22	33	21	25	34	13	20	264
DAPHNE, CITY OF	860	566	757	852	746	784	864	688	770	698	592	538	8,715
DAUPHIN ISLAND GATHERING	0	0	1	1	2	1	0	0	0	2	0	1	8

MEMBER	Jan-09	Feb-09	Mar-09	Apr-09	May-09	Jun-09	Jul-09	Aug-09	Sep-09	Oct-09	Nov-09	Dec-09	2009 YTD
DCP MIDSTREAM, LLC	0	0	0	1	0	0	0	0	0	0	0	0	1
DECATUR HOUSING AUTHORITY	7	7	8	11	8	6	7	4	3	8	9	3	77
DECATUR UTILITIES	322	353	393	434	375	411	425	411	317	798	810	556	5,605
DeKALB-CHEROKEE CO.	150	146	216	220	174	237	268	221	157	198	146	137	2,270
DEMOPOLIS CATV CO	18	17	33	25	22	23	21	26	17	15	28	15	260
DEMOPOLIS WATER WORKS & SEWER BOARD								32	19	20	28	19	118
DIVERSE POWER	12	52	17	22	20	16	17	17	37	29	21	14	274
DIXIE ELECTRIC COOPERATIVE	753	972	705	689	605	627	649	648	582	587	492	490	7,799
DIXIE PIPELINE-01	85	96	99	105	99	80	82	105	48	71	79	89	1,038
DIXIE PIPELINE-02	8	12	13	20	24	5	10	13	4	1	7	10	127
DIXIE PIPELINE-03	13	8	15	16	13	12	7	7	2	6	11	10	120
DORA UTILITIES	22	15	12	8	26	15	8	8	14	20	26	33	207
DOUGLAS PIPELINE													0
DTE BIOMASS ENERGY, INC.	3	5											8
EAST ALABAMA WATER DISTRICT	199	208	247	213	204	218	199	164	234	167	178	183	2,414
EAST CENTRAL BALDWIN WATER AUTHORITY	53	50	62	37	53	54	39	28	59	35	29	12	511
EAST CENTRAL BALDWIN WATER AUTHORITY - E	0	0	0	0	0	0	0	0	0	0	0	0	-
EAST CENTRAL GAS	18	38	44	50	41	71	86	101	51	68	45	32	645
EAST CULLMAN WATER SYSTEM, INC.	34	41	49	65	61	81	92	79	52	54	44	741	
EL PASO PRODUCTION COMPANY	17	28	24	21	31	16	27	27	25	29	18	32	295
ENBRIDGE PIPELINES (ALABAMA GATHERING), INC.	14	24	24	48	34	36	28	44	38	18	18	34	360
ENBRIDGE PIPELINES (ALABAMA INTRASTATE), INC.	100	122	114	162	134	160	166	156	174	112	98	82	1,580
ENBRIDGE PIPELINE (ALATENN), INC.	149	176	164	196	177	208	210	163	198	195	236	322	2,394
ENERGEN RESOURCES - OAK GROVE	19	38	49	27	22	25	31	44	66	60	63	62	506
ENERGEN RESOURCES - VANCE	124	147	171	129	129	147	105	90	194	144	128	143	1,651
ENGLEWOOD HULLS WATER SYSTEM	61	38	58	45	43	47	46	35	50	39	19	13	494
ENTERPRISE PRODUCTS OPERATING, LLC	66	79	93	94	101	105	69	80	90	79	77	71	1,004
ENTERPRISE PRODUCTS OPERATING L.P.	47	58	76	66	54	75	57	43	49	49	32	37	637
ESCAMBIA OPERATING COMPANY, LLC	32	19	20	18	13	16	11	21	10	11	16	196	
ENVIRO-SYSTEMS, LLC	51	44	44	78	66	76	31	23	28	33	15	15	504
EUFULA WATER WORKS & SEWER BD	80	75	80	96	89	92	86	101	97	83	69	78	1,026
EXXON COMPANY, U.S.A. - Mobile Bay	15	8	14	11	7	9	10	13	10	16	5	4	122
FAIRHOPE UTILITIES	611	472	531	589	576	616	614	510	541	524	487	442	6,513
FALKVILLE, TOWN OF	4	8	8	8	11	6	6	6	3	5	3	3	71
FARMERS TELEPHONE CO-OP, INC.	23	21	29	44	21	46	42	78	42	58	44	33	481
FAYETTE GAS	11	12	11	19	5	21	17	22	23	17	26	35	219
FAYETTE GAS - E	0	0	0	0	0	0	0	0	1	0	0	0	1
FAYETTEVILLE WATER SYSTEM	33	29	21	38	31	27	29	30	15	15	11	6	285
FLOMATON, TOWN OF	27	33	27	15	20	21	11	23	22	22	10	10	241
FLORALA GAS DEPARTMENT	5	6	3	12	4	4	3	13	3	14	10	6	83
FLORIDA GAS 01	42	37	36	33	39	46	40	62	50	60	43	45	533
FLORIDA GAS 02	41	91	95	61	48	80	60	71	67	49	34	26	723
FLORENCE HOUSING AUTHORITY	17	0	8	7	9	14	16	20	16	11	12	9	139
FLORENCE ELECTRICITY DEPARTMENT	466	509	678	719	596	740	765	671	551	440	483	428	7,046
FLORENCE WATER & SEWER DPT	345	332	474	470	377	493	508	431	340	288	311	288	4,657
FLORENCE STORM SEWER DEPARTMENT	231	203	300	332	235	268	290	276	228	188	197	166	2,914
FLORENCE NATURAL GAS DEPARTMENT	314	290	392	456	357	390	429	419	330	271	291	233	4,172
FORT RUCKER/REMTECH SERVICES	49	40	47	77	46	53	59	100	93	99	91	93	847
FOUR STAR OIL & GAS	39	36	47	55	45	81	56	24	18	24	27	23	475
FOUR STAR OIL & GAS - E	1	0	1	0	0	1	0	1	1	1	1	1	8
FREEBIRD GAS STORAGE	0	1	0	0	1	0	0	1	0	0	3	2	8
FREEMANVILLE WATER SYSTEM, INC.	27	27	36	31	24	36	35	32	19	13	12	6	298
FRONTIER COMMUNICATIONS OF ALABAMA	107	81	129	136	101	121	126	104	126	108	77	81	1,297
FRONTIER COMMUNICATIONS OF LAMAR CO	9	11	27	22	14	31	29	25	25	25	15	12	245
FRONTIER COMMUNICATIONS OF THE SOUTH	134	130	127	120	86	125	145	155	101	85	53	1,381	
FULTONDALE GAS	164	145	178	172	145	168	182	194	156	193	191	228	2,116
GENESIS CRUDE OIL, L.P.	114	141	68	60	331	336	532	385	322	300	243	126	2,958
GENEVA COUNTY GAS DISTRICT	19	14	16	18	19	39	21	36	15	39	26	20	282
GEOMET	16	39	59	30	23	23	15	14	19	23	13	23	297
GEORGIANA HOUSING AUTHORITY	1	0	0	0	0	0	0	0	0	1	0	0	2
GORDO, TOWN OF	22	12	12	5	14	55	18	8	37	9	1	1	198
GRAND BAY WATER WORKS, INC.	52	37	54	56	58	73	56	58	70	63	59	51	687
GRANGER ENERGY OF DECATUR LLC	0	0	0	7	0	1	2	3	0	3	1	1	18
GRAYSVILLE UTILITIES	78	62	74	134	78	99	90	97	95	87	73	79	1,046
GREATER GADSDEN HOUSING AUTHORITY	66	31	47	44	52	71	66	63	85	51	38	62	696
GREEHILL WATER & FIRE PROTECTION AUTHORITY	21	37	57	43	43	60	69	41	23	18	28	48	488
GTC, INC.	6	10	8	33	10	8	7	7	4	22	19	11	155
GUIN HOUSING AUTHORITY	26	3	14	1	0	5	2	3	3	0	2	3	62
GULF ATLANTIC OPERATIONS, LLC	3	0	0	1	0	0	3	0	6	0	1	0	14
GULF ATLANTIC OPERATIONS, LLC - E	0	0	0	0	0	0	1	0	0	0	0	0	1
GULF COAST MINERALS, LLC	36	29	42	33	30	56	72	35	23	32	19	19	426
GULF SHORES, UTILITIES BOARD OF THE CITY OF	223	100	175	138	132	165	140	174	107	130	93	148	1,725
GULF SOUTH PIPELINE	411	397	463	500	519	557	471	400	341	325	260	301	4,945
GULF SOUTH PIPELINE 02	44	39	44	33	37	33	16	18	32	32	24	26	378
GULF SOUTH PIPELINE 03	6	12	20	34	20	22	16	14	10	6	18	24	202
GULF TELEPHONE CO.	1,120	909	1,123	931	1,014	1,039	936	941	890	906	748	786	11,343
GULFSTREAM NATURAL GAS SYSTEM, LLC	7	7	12	10	12	9	1	2	1	2	1	2	65
GULFSTREAM NATURAL GAS SYSTEM, LLC - E	0	0	1	0	0	1	0	1	2	1	2	1	9
GUNTERSVILLE WATER BOARD	35	44	75	54	74	69	81	67	64	75	74	43	755
HACKLEBURG HOUSING AUTHORITY	10	5	20	15	32	17	26	1	6	2	1	7	142
HALEYVILLE HOUSING AUTHORITY	6	5	13	10	5	18	5	2	7	3	3	22	99
HAMILTON, HOUSING AUTHORITY OF	3	5	8	14	9	20	18	12	13	13	13	20	149
HANCEVILLE HOUSING AUTHORITY	6	7	24	18	14	24	17	14	9	3	6	21	163
HANCEVILLE HOUSING AUTHORITY - E	0	0	0	0	0	0	0	0	0	0	0	0	-
HARTSELLE UTILITIES	105	126	115	157	133	152	179	113	98	110	84	90	1,462

MEMBER	Jan-09	Feb-09	Mar-09	Apr-09	May-09	Jun-09	Jul-09	Aug-09	Sep-09	Oct-09	Nov-09	Dec-09	2009 YTD
HARVEST MONROVIA WATER SYSTEM	265	253	391	408	340	429	418	429	325	327	339	288	4,212
HAYNEVILLE TELEPHONE COMPANY, INC.	40	34	28	28	16	40	62	68	34	56	30	38	474
HAYNEVILLE TELEPHONE COMPANY, INC. - E	1	0	0	0	0	1	1	2	3	0	0	2	10
HIGHMOUNT EXPLORATION AND PRODUCTION	41	46	37	74	73	61	57	57	37	35	47	88	653
HILCORP ENERGY COMPANY	0	0	0	0	0	4	2	4	4	2	0	0	16
HOOVER, CITY OF	162	110	141	150	137	158	172	126	119	109	100	97	1,581
HUGULEY WATER AND FIRE PROTECTION	33	121	50	230	141	20	33	12	18	11	10	67	746
HUNT REFINING CO.	51	74	108	121	71	71	58	32	61	43	31	30	751
HUNTSVILLE, CITY OF - LANDSCAPE MANAGEMENT	267	258	323	326	287	407	320	380	321	308	245	297	3,739
HUNTSVILLE, CITY OF - WATER POLLUTION CONTROL	6	15	28	31	19	19	12	21	16	13	17	16	213
HUNTSVILLE HOUSING AUTHORITY	110	118	136	160	131	135	158	173	186	155	121	193	1,776
HUNTSVILLE UTILITIES - ELECTRIC DEPARTMENT	1,541	1,556	2,275	2,466	1,995	2,558	2,146	2,197	1,915	1,810	1,742	1,787	23,988
HUNTSVILLE UTILITIES - ELECTRIC DEPARTMENT - E	118	110	123	161	117	135	156	133	108	118	109	127	1,515
HUNTSVILLE UTILITIES - GAS DEPARTMENT	1,315	1,339	1,726	2,072	1,622	2,056	1,796	1,835	1,534	1,566	1,494	1,553	19,908
HUNTSVILLE UTILITIES - FIBER	24	35	37	51	32	44	39	29	62	58	45	66	522
HUNTSVILLE UTILITIES - WATER DEPARTMENT	1,017	1,020	1,245	1,582	1,163	1,547	1,269	1,394	1,198	1,183	1,146	1,213	14,977
ICG TELECOM GROUP, INC.	808	697	715	633	611	733	595	539	545	585	496	551	7,508
INTEGRA WATER, LLC	3	2	12	19	14	22	10	12	7	7	19	9	136
INTERSTATE FIBERNET	362	320	326	303	361	322	279	296	311	302	302	285	3,769
INTERSTATE TELEPHONE COMPANY	192	289	196	398	286	169	189	133	190	116	137	169	2,464
JABSCO OIL OPERATING, LLC	1	0	1	3	1	2	2	0	1	0	3	2	16
JACKSONVILLE GAS	61	44	68	92	36	60	49	60	46	32	50	24	622
JEMISON WATER DEPARTMENT	12	8	25	21	24	33	30	26	34	13	14	15	255
JENKINS BRICK COMPANY	0	0	0	0	0	2	2	3	10	6	1	5	29
JENKINS BRICK COMPANY 02	23	16	18	20	46	12	22	37	17	31	49	51	342
JOE WHEELER EMC	385	393	488	495	419	603	601	569	463	427	476	315	5,634
KENTUCKY DATA LINK, INC	30	59	70	60	52	107	56	53	52	46	38	42	665
KINDER MORGAN							4	7	5	3	2	3	24
KNOLOGY - GA	20	13	28	43	15	24	20	30	17	17	12	14	253
KNOLOGY OF MONTGOMERY	2,130	3,013	2,007	2,155	1,810	1,968	2,111	2,043	1,761	1,628	1,606	1,477	23,709
LAFAYETTE GAS	64	22	52	46	12	20	26	34	22	22	26	48	394
LAMAR COUNTY GAS	17	15	19	22	22	33	29	23	15	23	15	12	265
LAMAR COUNTY WATER AND FIRE PROTECTION AUTH	47	52	75	83	53	77	112	100	42	42	74	29	786
LANETT, CITY OF	40	172	17	318	186	18	32	28	30	10	14	28	893
LANETT HOUSING AUTHORITY	20	86	34	159	93	9	15	12	15	5	7	13	468
LEMOYNE WATER SYSTEM, INC.	59	70	83	101	85	129	83	38	40	58	40	37	823
LEVEL 3 COMMUNICATIONS	858	818	908	928	849	985	829	829	824	737	659	682	9,906
LIGHTCORE - 01	146	142	196	186	162	202	175	192	201	171	180	196	2,149
LIGHTCORE - 02	79	105	88	69	48	36	62	48	78	75	88	43	819
LIGHTWAVE TECHNOLOGIES, L.L.C.	113	104	117	96	77	77	104	106	142	155	106	74	1,271
LIGHTWAVE TECHNOLOGIES, L.L.C. 02	80	73	116	64	93	78	77	68	58	55	50	47	859
LIGHTWAVE TECHNOLOGIES, L.L.C. 03	222	127	175	197	188	175	228	175	122	151	190	163	2,057
LIGHTWAVE TECHNOLOGIES, L.L.C. 01-E	0	0	0	0	0	0	0	0	0	0	0	0	-
LIGHTWAVE TECHNOLOGIES, L.L.C. 03 - E	0	0	0	0	0	0	0	0	0	0	0	0	-
LINCOLN, CITY OF	69	71	70	62	59	48	100	64	55	44	40	39	721
LINDE GAS, INC.	18	22	23	19	13	11	15	20	13	18	24	22	218
LINDEN, CITY OF	13	19	14	25	15	26	34	21	16	11	13	24	231
LINDSEY COMMUNICATIONS	7	14	7	4	3	3	7	2	2	3	3	7	62
LINEVILLE HOUSING AUTHORITY	3	8	10	4	5	11	10	23	3	6	4	6	93
LIVINGSTON, CITY OF UTILITY BOARD	32	38	42	31	11	39	26	28	28	17	10	14	314
LOCAHAPOKA WATER AUTHORITY	38	50	74	88	70	94	116	89	82	136	83	89	1,009
LOXLEY, TOWN OF	97	68	82	49	101	109	80	95	89	93	67	60	990
LYNN WATER WORKS	3	2	4	4	3	4	4	8	8	6	5	2	53
MADISON, CITY OF PUBLIC WORKS DEPARTMENT	337	268	400	423	341	438	405	372	337	294	320	323	4,258
MADISON, CITY OF PUBLIC WORKS DEPARTMENT - E	12	6	8	6	14	11	8	13	9	8	4	5	104
MADISON, CITY OF WATER AND WASTEWATER	338	266	392	426	340	438	416	368	348	302	318	306	4,258
MADISON RIVER COMMUNICATIONS	273	231	260	222	246	215	173	181	213	200	188	151	2,553
MAGELLAN MIDSTREAM PARTNERS, LP	3	3	8	1	7	1	0	4	0	2	0	8	37
MAPLESVILLE WATERWORKS & GAS	15	23	18	39	28	25	29	38	24	21	25	303	
MARSHALL COUNTY GAS	189	225	288	278	271	310	275	353	296	260	209	179	3,133
MARSHALL COUNTY GAS - 02	130	131	147	140	154	198	170	163	182	154	151	146	1,866
MARSHALL COUNTY GAS - 03	43	36	59	56	42	44	46	56	50	63	23	27	545
MARSHALL DEKALB ELECTRIC COOPERATIVE													117
MEDIACOM	915	902	972	1,099	1,089	1,234	1,110	1,038	959	972	839	872	12,001
MEDIACOM 02	541	298	497	362	383	427	381	286	381	358	267	277	4,470
MEDIACOM 03	406	389	397	431	340	447	425	376	433	344	307	252	4,547
MEDIACOM 04	696	564	700	759	672	711	793	657	679	674	581	517	8,003
MEDIACOM - HUNTSVILLE	291	279	468	560	426	537	543	455	406	379	351	369	5,064
MCCALL WATER SYSTEM	90	109	74	86	69	64	72	71	76	68	46	56	881
MCI TELECOM	761	926	900	955	869	933	864	945	865	847	821	895	10,581
MILLRY TELEPHONE	51	38	32	51	49	57	53	69	47	44	34	51	576
MITCHELL WATER SYSTEM, INC.	58	86	84	94	68	103	105	70	64	43	44	34	853
MOBILE, CITY OF 01	1,007	1,129	1,247	1,255	1,267	1,416	980	550	1,249	1,228	1,061	1,120	13,509
MOBILE, CITY OF 01 - E	64	73	80	88	61	92	84	88	90	93	83	108	1,004
MOBILE GAS	2,219	2,228	2,437	2,573	2,672	2,901	2,438	2,290	2,213	2,253	1,964	2,047	28,235
MOBILE COUNTY WATER, SEWER AND FPA	353	301	349	346	353	370	298	277	258	323	255	312	3,795
MOBILE COUNTY WATER, SEWER AND FPA - E	14	3	15	12	11	11	6	19	10	16	16	12	145
MOBILE WATER & SEWER	1,446	1,575	1,719	1,849	1,880	2,104	1,812	1,741	1,672	1,679	1,448	1,513	20,438
MOMENTUM TELECOM	13	13	4	1	15	5	3	1	2	1	0	2	60
MONROE GAS STORAGE COMPANY, LLC	0	3	1	4	0	1	2	0	0	0	0	0	14
MONROEVILLE WATER WORKS	36	21	51	42	16	22	39	12	20	15	13	25	312
MONTEVALLO WATER	104	134	98	72	66	77	64	61	61	87	61	69	984
MOULTON GAS	46	42	48	47	33	85	119	63	41	40	50	25	639
MOUNDEVILLE TELEPHONE	49	47	77	75	69	71	71	64	79	53	52	37	744
MT VERNON WATER & GAS	22	14	11	21	20	20	21	28	26	10	5	29	227

MEMBER	Jan-09	Feb-09	Mar-09	Apr-09	May-09	Jun-09	Jul-09	Aug-09	Sep-09	Oct-09	Nov-09	Dec-09	2009 YTD
MULGA	18	8	25	31	26	30	23	39	27	43	30	41	341
MUSCLE SHOALS, CITY OF UTILITIES BOARD	129	98	96	151	107	144	134	97	123	89	110	117	1,395
NATIONAL TELEPHONE OF ALABAMA DBA TEC					15	11	17	15	14	22	27	2	130
NATURAL GAS SOLUTIONS	4	2	6	0	2	2	6	2	0	4	2	2	32
NEW HOPE TELEPHONE	29	51	70	92	129	65	44	55	42	70	54	68	769
NORTH AL GAS 01	262	251	265	288	221	314	301	231	247	212	218	208	3,018
NORTH AL GAS 02	570	499	737	801	670	825	803	699	626	578	662	607	8,077
NORTH AL GAS 03	44	47	51	50	40	48	65	48	60	44	55	29	581
NORTH BALDWIN UTILITIES	198	173	178	164	168	178	198	195	198	183	130	141	2,104
NORTHEAST MORGAN COUNTY WATER AUTHORITY	92	113	109	121	97	145	150	140	87	90	93	78	1,315
NORTHWEST AL GAS	456	217	324	325	356	294	291	222	215	209	203	174	3,286
NORTHWEST AL GAS - E	11	4	5	47	6	5	8	10	10	8	5	16	135
NOTASULGA, TOWN OF	10	21	21	15	9	14	8	13	11	18	8	17	165
OAKMAN TELEPHONE COMPANY	17	27	18	25	19	23	20	32	18	22	9	16	246
OGP OPERATING, INC	0	2	2	4	5	3	5	3	2	4	1	3	34
OTELCO TELEPHONE, LLC	56	56	103	31	67	107	51	67	62	37	16	33	686
OTELCO TELEPHONE, LLC - E	0	0	0	0	0	0	0	0	0	0	0	0	-
OTELCO TELEPHONE - BLOUNTSVILLE DIVISION	61	23	85	24	25	74	45	37	61	25	15	8	483
OTELCO TELEPHONE.LLC/WALNUT GROVE	80	18	125	110	93	35	31	38	22	20	8	18	598
ONEONTA UTILITIES	180	177	250	174	178	265	234	279	207	198	130	98	2,370
OPELIKA HOUSING AUTHORITY	1	1	0	3	2	2	1	1	0	1	1	1	14
OPELIKA PWR & LIGHT	230	174	225	257	207	256	251	212	203	164	196	142	2,517
OPELIKA WATER	279	224	310	367	281	336	316	239	281	211	242	189	3,275
OPELIKA WATER - E	18	19	13	18	17	17	14	10	15	17	16	17	191
OPP HOUSING AUTHORITY	0	0	0	3	1	2	4	0	1	2	1	0	14
ORANGE BEACH WASTEWATER TREATMENT PLANT	129	99	182	118	138	152	136	102	85	94	64	71	1,370
ORANGE BEACH WATER, SEWER AND FPD	118	84	150	101	116	146	119	100	79	87	60	69	1,229
PALMER PETROLEUM, INC.	23	11	25	16	14	10	16	3	4	5	6	8	141
PARKER CREEK WATER COMPANY, LLC	5	6	10	3	7	2	2	5	4	3	0	3	50
PERDIDO BAY WATER, SEWER & FPD	101	43	65	40	30	29	45	37	43	55	53	53	594
PHIL CAMPBELL HOUSING AUTHORITY	5	1	18	0	15	4	0	1	4	0	0	4	52
PHIL CAMPBELL WATER WORKS & SEWER BOARD	18	19	50	26	64	28	21	21	18	8	9	21	303
PICKENS COUNTY GAS	4	3	9	8	9	21	21	13	15	25	17	10	155
PIEDMONT HOUSING AUTHORITY	18	16	9	11	13	20	9	12	6	9	7	14	144
PIEDMONT WATER, SEWER, & GAS BD	49	36	37	45	39	37	32	29	19	23	36	66	448
PINE BELT TELEPHONE COMPANY	69	54	74	78	60	99	96	62	92	62	53	62	861
PINE BLUFF WATER AUTHORITY	9	17	12	14	12	13	13	54	55	25	8	8	240
PINE ENERGIES	8	3	2	0	1	4	4	4	5	6	3	1	41
PLAINS MARKETING, LP	41	40	46	43	105	57	50	37	47	49	30	35	580
PLANTATION PIPELINE	859	1,804	452	465	355	381	360	368	301	326	274	251	6,196
POARCH CREEK INDIANS UTILITIES	18	23	28	28	16	28	23	24	17	11	7	6	229
PRAXAIR, INC.	8	8	20	8	12	4	0	0	0	0	12	0	72
PROCALL SERVICES	92	109	144	177	168	194	155	138	119	126	104	111	1,637
QUANTUM RESOURCES MGT LLC								1	3	0	0	1	5
QWEST COMMUNICATIONS	186	184	186	205	178	152	133	124	156	183	148	131	1,966
RED BAY WATER AND GAS BOARD	39	32	28	33	45	22	20	32	11	15	10	29	316
RIVIERA UTILITIES (01)	494	347	454	500	449	524	552	442	483	474	418	346	5,483
RIVIERA UTILITIES (02)	543	367	487	389	420	420	412	390	371	414	321	322	4,856
ROANOKE, UTILITIES BOARD OF THE CITY OF	10	16	3	14	14	20	8	11	6	6	5	7	120
ROANOKE TELEPHONE COMPANY	22	34	12	40	30	65	22	24	24	24	17	13	330
ROBERTSDALE, CITY OF	80	58	90	60	83	76	76	48	55	70	51	33	780
ROBINSON'S BEND OPERATING COMPANY	44	51	64	63	34	59	43	36	28	42	28	29	521
ROCKFORD WATER & GAS	6	3	10	34	5	11	5	6	6	5	2	2	95
RUSSELLVILLE GAS BOARD	83	84	85	112	84	115	127	85	75	88	65	83	1,086
SAMSON RESOURCES COMPANY	6	9	10	9	11	12	15	10	4	9	7	4	106
SARALAND WATER SERVICE	74	34	45	45	82	79	69	55	48	45	52	43	671
SARALAND, CITY OF	91	49	67	65	105	95	87	62	51	53	58	61	844
SCOTTSBORO ELECTRIC POWER BOARD	47	65	81	96	68	93	68	105	64	72	74	64	897
SCOTTSBORO HOUSING AUTHORITY	2	3	5	2	1	1	1	1	3	2	7	4	32
SCOTTSBORO WATER, SEWER & GAS	54	76	88	102	76	95	74	113	69	168	168	140	1,223
SELLERS STATION WATER AUTHORITY	8	9	11	12	7	10	25	9	7	5	14	9	126
SELMA HOUSING AUTHORITY	88	66	44	52	41	92	47	53	57	66	28	95	729
SG RESOURCES, MISSISSIPPI, LLC													0
SHEFFIELD UTILITIES	246	262	250	287	236	295	322	239	253	213	232	189	3,024
SHELBY COUNTY WATER SERVICES	237	312	284	340	267	473	343	316	316	314	234	194	3,660
SHELL CHEMICAL	11	5	6	7	10	11	10	14	13	7	12	3	109
SHELL CHEMICAL - E	1	0	1	1	2	0	1	0	0	0	0	0	5
SHELL WESTERN E&P, INC. YELLOWHAMMER	0	8	2	0	2	2	2	2	6	4	0	2	34
SHELL WESTERN E&P, INC. YELLOWHAMMER - MOBILE PLANT LINES 02			16	19	22	25	11	30	36	28	37	10	234
SILVERHILL, TOWN OF	36	15	38	24	40	32	31	19	18	21	20	9	303
SINGING RIVER ELECTRIC POWER ASSOCIATION	7	0	9	3	4	0	0	1	4	2	1	6	37
SLOCOMB WATER AND SEWER BOARD	4	12	6	7	5	7	9	2	5	10	8	5	80
SMITHS WATER AND SEWER AUTHORITY	148	156	181	178	138	184	213	207	203	128	150	129	2,015
SOUTH ALABAMA ELECTRIC COOPERATIVE			94	107	77	133	463	125	142	94	63	78	1,376
SOUTH ALABAMA GAS DISTRICT - 01	27	96	97	126	101	112	114	96	107	80	87	65	1,108
SOUTH ALABAMA GAS DISTRICT - 02	60	62	97	76	50	60	81	57	72	65	42	46	768
SOUTH ALABAMA GAS DISTRICT - 03	27	33	27	15	20	21	11	23	22	22	10	10	241
SOUTH ALABAMA GAS DISTRICT - 04	8	5	13	20	31	28	19	15	16	10	13	8	186
SOUTH ALABAMA UTILITIES	627	631	670	867	858	927	861	773	776	778	637	620	9,025
SOUTH ALABAMA UTILITIES - E						31	11	25	19	23	22	18	149
SOUTH EASTERN DEVELOPMENT CORPORATION	7	0	2	4	2	4	16	4	5	2	2	1	49
SOUTHCROSS ENERGY GP LLC	68	88	52	60	48	40	84	64	68	68	52	28	720
SOUTHEAST ALABAMA GAS - ALL DISTRICTS	1,393	1,647	1,586	1,595	1,324	1,524	1,931	1,563	1,530	1,432	1,293	1,337	18,155
SOUTHEAST SUPPLY HEADER	14	21	52	134	68	80	80	42	54	64	22	32	663
SOUTH OF DAUPHIN APARTMENTS	1	0	0	0	0	0	2	0	1	0	1	0	6

MEMBER	Jan-09	Feb-09	Mar-09	Apr-09	May-09	Jun-09	Jul-09	Aug-09	Sep-09	Oct-09	Nov-09	Dec-09	2009 YTD	
SOUTHERN LIGHT, LLC		598	565	717	628	679	700	627	630	565	615	529	607	7,460
SO GAS TRANSMISSION		13	40	8	36	20	18	8	16	22	24	12	12	229
SO GAS TRANSMISSION - E		3	10	1	9	5	7	4	8	11	12	1	6	77
SO NAT GAS-ANNISTON		182	180	164	121	96	168	188	144	174	159	141	144	1,861
SO NAT GAS - AUBURN		222	119	194	218	188	156	177	144	148	126	112	101	1,905
SO NAT GAS-BHAM		277	261	250	314	377	273	303	291	206	243	262	204	3,261
SO NAT GAS - ELMORE		37	92	82	64	81	79	64	76	76	76	77	76	861
SO NAT GAS - GALLION		26	14	28	29	29	28	22	38	20	13	24	18	289
SO NAT GAS-OPELIKA		90	94	106	124	110	134	112	143	154	116	113	89	1,385
SO NAT GAS - THOMASVILLE		5	8	3	6	3	10	5	1	2	0	0	2	47
SO NAT GAS - THOMASVILLE - E		3	6	1	1	0	5	0	0	1	0	0	1	19
SO NAT GAS-TUSCALOOSA		59	61	48	52	59	40	61	29	52	35	33	45	574
SOUTHERN POWER COMPANY		2	1	3	0	1	1	3	1	0	2	1	1	16
SPANISH FORT WATER SYSTEM		127	79	111	127	108	99	77	62	95	83	109	88	1,165
SPOONER PETROLEUM COMPANY		2	4	0	1	3	3	4	1	3	3	3	8	35
SPOONER PETROLEUM COMPANY - E		2	4	0	1	3	3	4	1	3	3	3	8	35
SPRING CREEK APARTMENTS		18	16	17	17	12	24	18	19	11	13	9	10	184
SPRINT		165	213	179	200	181	221	227	219	250	197	230	251	2,533
SOUTHERN BELL GA		21	17	23	29	31	27	23	60	68	65	43	44	451
ST SERVICES		5	13	6	11	7	6	10	27	22	55	32	4	198
STEVENSON, UTILITIES BD OF THE TOWN OF		12	8	3	6	6	11	10	14	18	9	8	13	118
STEVENSON, UTILITIES BD OF THE TOWN OF - E		0	0	0	0	0	1	0	1	0	0	0	0	2
STEWARTVILLE WATER AUTHORITY		15	31	23	26	21	21	21	19	16	25	13	14	245
SULLIGENT HOUSING AUTHORITY		13	13	24	29	17	6	26	26	2	6	8	0	170
SUMMERDALE, TOWN OF		31	27	18	29	26	30	27	21	14	16	12	9	260
SUMITON GAS BOARD		15	8	10	2	20	11	7	16	21	20	28	33	191
SYLACAUGA HOUSING AUTHORITY		18	22	26	18	17	10	12	25	28	44	48	50	318
SYLACAUGA HOUSING AUTHORITY - E		3	4	4	0	0	1	0	1	8	8	0	3	32
SYLACAUGA UTILITIES BOARD		125	124	120	166	155	148	142	144	134	150	130	125	1,663
TALLADEGA HOUSING AUTHORITY		15	50	33	55	69	50	28	30	29	17	20	42	438
TALLADEGA WATER AND SEWER BOARD		115	146	163	134	146	137	210	144	140	127	101	134	1,697
TALLASSEE, CITY OF		52	61	44	63	31	28	36	28	31	30	20	30	454
TALLASSEE HOUSING AUTHORITY		12	17	3	6	1	3	1	0	5	3	7	2	60
TCG		79	107	57	64	37								344
TDS TELECOM - CENTRE		91	72	162	146	146	184	161	163	126	124	98	116	1,589
TDS TELECOM - BUTLER		23	29	55	64	37	41	43	35	31	30	27	15	430
TDS TELECOM - GOSHEN		5	1	9	5	3	3	2	5	6	9	0	8	56
TDS TELECOM - GROVE HILL		15	12	17	28	24	32	19	26	26	27	18	4	248
TELEPAK NETWORKS		92	109	144	177	168	194	155	138	119	126	104	111	1,637
TENASKA ALABAMA PARTNERS		0	1	6	1	2	1	3	0	1	0	1	1	17
TENNESSEE GAS PL 01		6	11	4	7	9	11	22	10	6	11	8	7	112
TENNESSEE GAS PL 02		2	1	0	0	1	1	0	1	0	0	0	0	6
TENNESSEE GAS PL 03		11	16	10	9	10	4	5	4	2	4	0	1	76
TEXAS EASTERN GAS 01		11	16	22	15	13	26	23	27	23	30	21	15	242
TEXAS EASTERN GAS 02		7	7	8	7	2	0	3	6	7	8	3	1	59
TEXAS EASTERN GAS - E		0	0	0	0	0	0	0	1	0	0	1	1	3
THORSBY, TOWN OF		19	5	18	19	16	15	24	9	8	14	11	4	162
TIMBER RIDGE APARTMENTS		8	21	16	13	30	8	7	8	11	8	18	13	161
TRANSCO PL-01		0	7	25	30	15	23	11	15	11	5	6	7	155
TRANSCO PL-01 - E		0	0	0	0	0	0	0	0	0	0	0	0	-
TRANSCO PL-02		3	4	1	3	7	18	10	16	8	10	6	2	88
TRANSCO PL-03		3	7	18	19	17	19	14	12	11	4	9	14	147
TRANSCO PL-04		18	14	18	21	15	18	24	26	26	48	28	20	276
TRANSCO PL-04 - E		0	1	0	0	3	1	0	1	0	1	2	0	9
TRUSSVILLE UTILITIES		483	407	429	531	552	597	669	652	441	416	474	327	5,978
TURNERVILLE WATER AND FPD		51	62	78	102	56	46	51	28	32	32	36	44	618
TURNERVILLE WATER AND FPD - E		0	0	0	0	0	0	0	0	0	0	0	0	-
TUSCALOOSA, CITY OF		751	794	954	1,088	822	899	899	704	676	619	556	601	9,363
TUSCUMBIA GAS		76	80	84	111	82	87	83	92	89	70	76	67	997
TUSCUMBIA HOUSING AUTHORITY		35	35	37	52	37	44	55	54	39	31	31	36	486
TUSCUMBIA HOUSING AUTHORITY - E		0	0	0	0	0	0	0	0	0	0	0	0	-
UNION SPRINGS TELEPHONE CO.		257	522	416	477	322	315	378	395	333	258	328	295	4,296
UNION SPRINGS UTILITIES BOARD		5	5	4	4	1	3	5	6	0	4	6	5	48
UNION SPRINGS UTILITIES BOARD - E		0	0	0	0	0	0	1	0	0	1	0	0	2
UNOCAL CORPORATION		44	55	64	84	54	70	51	28	29	31	31	30	571
UNIVERSITY OF ALABAMA IN HUNTSVILLE		6	2	8	6	12	15	19	13	15	15	6	28	145
URIAH WATER SYSTEM		9	10	14	10	11	17	11	14	23	14	19	8	160
US AMINES									60	113	105	51	66	395
US STEEL		4	5	15	4	4	9	6	5	2	2	3	7	66
USG PIPELINE COMPANY		0	0	0	0	0	0	0	0	0	0	0	0	-
UTILIQUEST		3,603	3,270	3,820	3,824	3,915	4,266	3,848	3,614	3,467	3,531	2,978	3,031	43,167
UTILIQUEST - GA		225	279	257	455	333	198	232	208	237	184	176	223	3,007
VAW WATER SYSTEM, INC.		79	76	86	164	145	187	155	129	67	73	96	105	1,362
VALLEY BROOK APARTMENTS		6	6	11	11	15	11	17	4	6	5	2	7	101
VERNON HOUSING AUTHORITY		0	2	3	1	0	8	3	2	4	2	2	4	31
VERNON WATER AND SEWER BOARD		8	10	12	11	5	19	11	14	10	10	23	6	139
VINA NATURAL GAS		1	5	5	13	1	4	6	5	1	6	1	0	48
WADLEY, TOWN OF		2	2	2	2	1	0	2	8	0	0	0	0	19
WARRIOR RIVER WATER AUTHORITY		164	208	229	241	185	209	181	170	144	155	157	114	2,157
WEATHERLY UTILITY SERVICES, LLC		22	28	52	60	47	36	60	40	55	47	53	36	536
WEDOWEE, TOWN OF		5	56	38	34	36	74	46	37	36	29	43	28	462
WEST JEFFERSON		8	9	10	11	10	6	11	4	11	5	5	2	92
WEST MORGAN-EAST LAWRENCE WATER		133	129	180	167	138	178	144	155	152	157	159	128	1,820
WHEELER BASIN NATURAL GAS COMPANY		104	108	115	138	105	137	142	137	90	113	111	76	1,376
WHITEHOUSE WATER SYSTEM		36	26	41	34	29	44	52	25	26	40	24	17	394

MEMBER	Jan-09	Feb-09	Mar-09	Apr-09	May-09	Jun-09	Jul-09	Aug-09	Sep-09	Oct-09	Nov-09	Dec-09	2009 YTD
WILCOX COUNTY GAS DISTRICT	19	8	27	14	10	12	24	27	25	25	15	10	216
WILLIAMS FIELD SERVICES	0	0	0	2	0	0	0	0	2	0	1	0	5
WILTON, TOWN OF	15	15	24	19	28	15	31	42	28	73	10	16	316
WINDSTREAM 01	309	408	387	457	428	451	572	534	508	509	445	462	5,470
WINDSTREAM 02	62	88	72	82	70	76	76	66	47	79	56	59	833
WINFIELD HOUSING AUTHORITY	5	4	17	8	4	4	4	0	3	3	3	1	56
XSPEDIUS - MONTGOMERY 01	101	94	97	119	90	48	53	65	69	68	67	47	918
XSPEDIUS - BIRMINGHAM 02	278	293	250	207	197	245	192	171	138	167	173	180	2,491
XSPEDIUS - MOBILE 03	113	165	142	143	139	156	136	143	145	133	115	140	1,670
YORK, CITY OF	16	14	10	24	15	8	5	10	13	4	21	7	147

ALABAMA ONE-CALL INCOMING CALL DISTRIBUTION REPORT - 2009

COUNTY	JAN	FEB	MAR	APR	MAY	JUNE	JULY	AUG	SEPT	OCT	NOV	DEC	TOTALS
AUTAUGA	299	1,187	425	415	372	440	384	424	359	316	286	255	5,162
BALDWIN	1,627	1,223	1,561	1,430	1,397	1,522	1,495	1,370	1,334	1,352	1,111	1,080	16,502
BARBOUR	111	99	121	135	131	128	159	137	134	116	100	123	1,494
BIBB	102	88	108	109	142	153	110	128	113	184	74	62	1,373
BLOUNT	223	128	312	202	188	310	206	262	264	164	113	79	2,451
BULLOCK	10	30	13	23	20	14	9	21	12	12	17	12	193
BUTLER	52	46	54	116	71	103	81	91	48	48	38	56	804
CALHOUN	445	404	576	549	418	691	537	585	498	491	500	389	6,083
CHAMBERS	236	309	237	444	318	203	223	167	208	146	168	217	2,876
CHEROKEE	69	48	98	105	99	157	118	148	110	111	79	87	1,229
CHILTON	182	225	249	286	260	354	309	346	316	246	378	220	3,371
CHOCTAW	24	29	57	66	67	57	44	40	37	30	44	38	533
CLARKE	101	102	132	169	121	148	135	117	129	125	85	82	1,446
CLAY	29	42	49	48	50	66	69	96	62	74	69	33	687
CLEBURNE	90	84	120	132	172	156	159	185	182	152	192	252	1,876
COFFEE	185	192	182	148	152	176	159	159	147	164	128	101	1,893
COLBERT	367	348	345	444	357	438	440	348	365	298	313	267	4,330
CONECUH	60	77	77	117	88	95	121	91	61	65	61	49	962
COOSA	30	64	47	73	43	72	61	55	57	44	17	23	586
COVINGTON	122	99	98	134	89	91	97	103	81	105	101	70	1,190
CRENSHAW	42	37	28	31	25	38	26	22	45	17	19	27	357
CULLMAN	469	477	543	621	544	746	656	636	493	408	508	456	6,557
DALE	427	398	406	491	361	421	455	483	568	515	476	552	5,553
DALLAS	226	175	200	214	160	295	250	233	210	196	153	202	2,514
DEKALB	91	116	152	136	114	127	142	130	85	105	96	73	1,367
ELMORE	543	611	812	614	468	541	526	512	428	425	380	344	6,204
ESCAMBIA	256	275	229	201	184	219	200	199	258	182	145	111	2,459
ETOWAH	354	310	419	460	412	468	539	516	487	368	344	370	5,047
FAYETTE	57	64	66	75	81	75	55	105	89	66	67	70	870
FRANKLIN	107	119	137	155	177	113	108	107	76	102	63	106	1,370
GENEVA	43	37	50	50	41	62	50	60	42	75	59	34	603
GREENE	65	123	75	78	55	80	76	55	73	64	48	34	826
HALE	97	101	123	108	130	175	169	175	125	107	123	74	1,507
HENRY	46	48	64	77	59	47	49	61	58	60	45	44	658
HOUSTON	359	381	480	458	441	480	376	406	399	379	359	302	4,820
JACKSON	104	119	153	179	124	159	138	175	143	140	148	114	1,696
JEFFERSON	4,055	4,011	4,428	4,482	3,790	4,232	4,115	4,263	3,573	4,014	3,368	3,048	47,379
LAMAR	47	52	75	83	53	78	112	101	42	42	75	28	788
LAUDERDALE	470	510	682	728	599	750	769	679	558	444	486	430	7,105
LAWRENCE	134	111	158	156	121	201	213	185	166	165	187	79	1,876
LEE	820	878	1,111	1,191	869	1,059	1,076	1,032	891	788	798	828	11,341
LIMESTONE	615	527	584	687	621	783	1,021	661	611	605	528	562	7,805
LOWNDES	37	41	26	31	17	37	59	51	34	38	34	43	448
MACON	120	132	121	115	96	130	162	139	175	112	91	79	1,472
MADISON	1,729	1,656	2,240	2,719	2,122	2,708	2,323	2,337	2,027	1,932	1,842	1,910	25,545
MARENGO	86	68	78	95	81	86	99	79	71	54	61	63	921
MARION	141	115	173	222	219	153	147	93	94	109	96	79	1,641
MARSHALL	235	215	331	309	339	339	302	319	351	367	308	274	3,689
MOBILE	2,390	2,367	2,655	2,816	2,836	3,110	2,687	2,548	2,476	2,478	2,168	2,245	30,776
MONROE	89	71	116	105	76	98	112	87	98	85	61	74	1,072
MONTGOMERY	1,804	1,809	1,536	1,708	1,417	1,470	1,707	1,602	1,392	1,298	1,292	1,188	18,223
MORGAN	552	619	662	732	616	768	772	732	564	616	632	489	7,754
PERRY	25	23	76	55	27	33	57	44	21	48	38	45	492
PICKENS	71	46	55	56	50	77	109	60	71	105	55	33	788
PIKE	81	65	111	126	95	160	474	131	143	120	77	70	1,653
RANDOLPH	99	136	101	133	103	236	156	122	91	124	85	69	1,455
RUSSELL	377	280	356	322	395	414	460	394	399	337	342	344	4,420
SHELBY	1,379	1,529	1,549	1,626	1,446	1,921	1,806	1,814	1,581	1,576	1,415	1,391	19,033
ST CLAIR	441	493	493	508	542	607	703	628	611	503	579	568	6,676
SUMTER	92	116	166	150	78	129	120	59	57	62	62	43	1,134
TALLADEGA	426	457	468	466	469	451	558	476	431	401	348	356	5,307
TALLAPOOSA	294	272	290	281	228	244	305	222	205	208	173	178	2,900
TUSCALOOSA	1,171	1,251	1,548	1,655	1,424	1,510	1,450	1,262	1,160	1,090	932	975	15,428
WALKER	215	244	260	264	271	347	309	303	260	300	212	199	3,184
WASHINGTON	67	54	38	65	42	59	65	76	58	63	38	41	666
WILCOX	47	30	36	26	21	31	30	43	28	29	19	17	357
WINSTON	82	110	117	101	101	99	117	158	110	82	73	102	1,252
TOTAL	25,841	26,503	29,438	31,106	27,095	31,740	31,126	29,448	26,445	25,647	23,382	22,258	330,029

**EXCAVATOR LOCATE REQUESTS WITH
LESS THAN 48 HOUR NOTICE
2009**

MONTH	SHORT NOTICE LOCATE REQUESTS	TOTAL LOCATE REQUESTS	PERCENTAGE
January	4,935	25,841	19%
February	4,548	26,503	17%
March	5,112	29,438	17%
April	5,775	31,106	19%
May	5,061	27,095	19%
June	6,110	31,740	19%
July	6,081	31,126	20%
August	5,741	29,448	19%
September	4,914	26,445	19%
October	4,589	25,647	18%
November	3,747	22,259	17%
December	3,911	23,382	17%
TOTAL	60,524	330,030	18%

2009 PUBLICITY AND ACTIVITIES

I. PUBLIC TALKS, PRESENTATIONS AND ASSOCIATION MEETINGS

Alabama Association of Volunteer Firefighters Conference – Florence, AL

Alabama Broadcasters Association Annual Conference – Orange Beach, AL

Alabama Cable Telecommunications Association Convention –
Orange Beach, AL

Alabama County Commissioners Association Convention – Orange Beach, AL

Alabama PSC Gas Pipeline Safety Meeting – Montgomery, AL

Alabama League of Municipalities Annual Convention – Montgomery, AL

AL/MS Water Works Association Convention – Biloxi, MS

Alabama Natural Gas Association Spring Seminar - Birmingham, AL

Alabama Natural Gas Association Annual Conference – Pensacola, FL

Alabama Natural Gas Association Round Table Training – Birmingham, AL

Alabama Rural Electric Cooperative Association Convention – Montgomery, AL

Alabama Rural Water Association Convention – Montgomery, AL

ALDOT Maintenance Bureau Management Conference
- Montgomery, AL

ALDOT Construction Engineers Conference – Montgomery, AL

AL/MS Telecommunications Symposium – Sandestin, FL

Alabama Vegetation Management Society Conference – Tuscaloosa, AL

Alabama Public Awareness Cooperative Training (APACT) Meetings -
Huntsville, Ozark, Fayette, Aliceville, Bay Minette, Calera, Gardendale, Atmore,
Scottsboro, Prattville, Auburn, Oxford, Northport, Alexander City, Florence,
Mobile, Thomasville

Association of County Engineer's Conference – Point Clear, AL

Alabama Utility Contractors Association General Membership Meeting –
Montgomery, AL

Alabama Utility Contractors Association General Membership Meeting, “Call 811
Before You Dig Presentation”– Decatur, AL

Alabama Utility Contractors Association General Membership Meeting, “Call 811
Before You Dig Presentation” – Bessemer, AL

Birmingham Area Municipalities Association EXPO – Gardendale, AL

CGA Excavation & Safety Conference – Orlando, FL

CGA Progressive Agriculture Safety Days – Hayneville, AL

CGA Progressive Agriculture Safety Days – Hazel Green, AL

CGA Progressive Agriculture Safety Days – Fort Payne, AL

CGA Progressive Agriculture Safety Days – Livingston, AL

CGA Progressive Agriculture Safety Days – Lowndesboro, AL

Central Alabama Construction Safety Conference – Hyundai Plant, AL

City of Attala Public Works Safety Meeting – Attala, AL

Code Officials Association of Alabama Conference – Orange Beach, AL

Contractor Awareness/Dig Safely Breakfast – Decatur Utilities, AL

Locate Rodeo – Duluth, GA

Pipeline Group Meeting – Pelham, AL

National Association of Pipeline Safety Administrators, Southern Region
Conference – Orange Beach, AL

Rotary Club “Call 811 Before You Dig Presentation” – Alabaster, AL

Southern Gas Association/ANGA Fall Seminar – Athens, AL

Utility Coordination Committee Bi-Monthly Meetings – Anniston, AL

Utility Coordination Committee Bi-Monthly Meetings – Birmingham, AL

Utility Coordination Committee Bi-Monthly Meetings – Pelham, AL

Utility Coordination Committee Quarterly Meetings – Athens/Decatur, AL

Utility Coordination Committee Quarterly Meetings – Mobile, AL

Utility Coordination Committee Quarterly Meetings – Tuscaloosa, AL

Wetumpka Public Works Safety Meeting – Wetumpka, AL

II. ARTICLES AND PUBLICATIONS

Alabama Gardner Magazine – 3 Advertisements

Associated Builders and Contractors Directory and User's Guide – Advertisement

Alabama County Commissioners Magazine – Editorial for April National Safe Digging Month

Alabama County Commissioners Magazine – Advertisement 3 issues

Associated General Contractors "Build Alabama Awards" Banquet Program – Advertisement

AGC Southern Constructor - EI Constructor – Advertisement 3 issues

Associated General Contractors Action News – Advertisement and 811 Editorial

Associated General Contractors Membership Directory Advertisement

Alabama Association of Volunteer Firefighters Conference Magazine – Advertisement

Alabama League of Municipalities Journal – Advertisement 3 issues

Alabama Plumbing News - Advertisement 5 issues

Alabama - Mississippi Telephone Association Membership Directory – Directory Listing and Advertisement

Alabama Natural Gas Association Membership Directory - Advertisement

Alabama Road Builder Association Membership Directory – Advertisement

Alabama Road Builder Magazine – Advertisement

Alabama Rural Water Association Directory – Advertisement

Alabama Rural Water Association – The Waterline – Quarterly Publication – Advertisement 4 issues

Bill Insert – Alabama Power

Bill Insert – Alagasco

Bill Inserts – AT&T

Birmingham Barons Hoover Met Public Service Announcements – Barons Baseball

Birmingham Magazine City Guide - Advertisement

Building in Alabama – Homebuilders of Alabama Association – Advertisement 3 issues

Calera Monthly - Calera Gas /Alabama One Call Advertisement

Delta Sky Magazine - 2 Ads (Coop with 20 other One Call Centers)

Fultondale Chamber of Commerce T-Shirt - Ad

Greater Birmingham Homebuilders Association Membership Directory -Ad

Martha Stewart Living Magazine – Advertisement – (Coop with 11 other One Call Centers)

NAPSAR Southern Region Conference Program - Advertisement

Old House Journal Magazine – Advertisement - (Coop with 3 other One Call Centers)

PIPELINE, Alabama Waterworks Association Magazine – 4 Advertisements

Popular Mechanics Magazine – Advertisement - (Coop with 3 other One Call Centers)

The North Jefferson News – Fultondale Gas 811 Call Before You Dig - Advertisement

Southern Living Magazine - Advertisement

Southeast Alabama Gas District Newsletter – Call Before You Dig Article

US Airways Gift Guide – 2 Ads (Coop with 11 other One Call Centers)

Weather E-Forecast ABC 33/40 – Advertisement - Multiple Months

White Page Directory Listings for multiple telephone companies in Alabama

III. Advertising/Media Activities

Auburn University Radio Network

“Tiger Talk” Program with Coach Chizik - :10 second Call 811 Before You Dig mentions and :30 Joey Logano 811 commercials - 13 weeks

University of Alabama Crimson Tide Radio Network

“Hey Coach” Program with Coach Saban - :10 second Call 811 Before You Dig mentions and :30 Joey Logano 811 commercials - 13 weeks

Talladega Billboard – Joey Logano 811

Texas Motor Speedway 811 Signage and National TV coverage during April NASCAR race – (Coop with 6 other One Call Centers)

WJOX FM Sports Radio

- “Paul Finebaum Statewide Radio Network” and “The Opening Drive” 811 Radio Spots for April, August, September, October, November
- Region’s Memorial Golf Classic Week – Ninety six :10 second mentions - May– Promoting 811
- SEC Media Days Live Broadcast at Wynfrey Hotel – WJOX FM and WSPZ AM Sponsorship Forty :10 second mentions and twelve radio spots - July– Promoting 811
- “Opening Drive” - Coach Tuberville Weekly Interview
15 weeks of :10 second 811 mentions and :30 second 811 radio spots

WDXB 102.7 Black History Month – Two :30 second radio spots

IV. Alabama One Call Publications

Newsletter mailed to mail list over 16,100 Excavators and AOC Members

Newsletter to AOC Membership

Pipeline Safety and Emergency Response Booklet for APACT program

Educational Materials and Alabama One Call Handouts were mailed to the Contractors and Member Companies by request

V. One-Call Meetings

Alabama Damage Prevention Committee Meetings

Common Ground Alliance Annual Meeting and Excavation Safety Conference – Orlando, FL

Common Ground Alliance Dig Safely Month Planning Conference Calls

Common Ground Alliance Regional Partners Meeting – Orlando, FL, Nashville, TN and Conference Call

Mark-It Madness Committee Meetings

One Calls of America – Semi Annual Meetings

One Calls of America Health Committee

One Call Systems International E-Survey Committee

One Call Systems International/CGA Meeting – Orlando, FL

Partners in Training (PIT) Crew Training Committee Meetings

Progressive Partnering IT/GIS Development Council Meetings

Southeast Regional One Call Spring Meeting – St Augustine, FL

Southeast Regional One Call Fall Meeting – Chattanooga, TN